

BiOTECK®

The science of bone tissue

safetybiocompatibility

osteoconduction

completeremodelling

natural bone
substitute

bio-gen granules, gel, putty and blocks

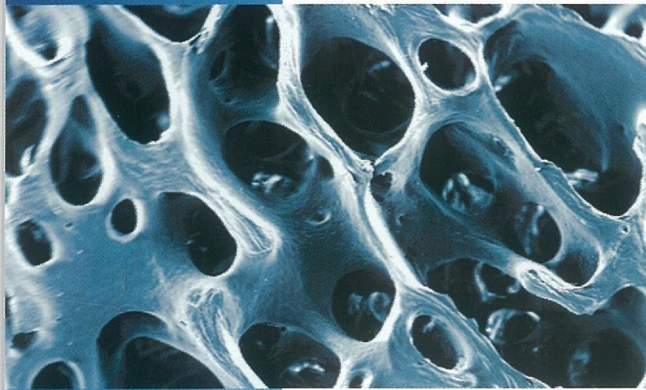
osteoplant sheets and membranes

biocollagen gel and membranes

enzymatic deantigenation

Bioteck

exclusive **deantigenation** process



Bioteck bone substitutes are obtained from equine bone tissue using an exclusive chemical-physical enzymatic deantigenation process. **The use of digestive enzymes** operating at physiological temperature (37°C) enables the complete elimination of the antigenic component of the tissue, without the mineral component undergoing any changes. The unmodified bone mineral phase is recognised as endogenous by the osteoclasts. The bone substitute consequently undergoes a total remodelling process, in the end being completely substituted by endogenous bone in physiological times. The best possible condition for osseointegrated implants.

enzymatic process at 37°C

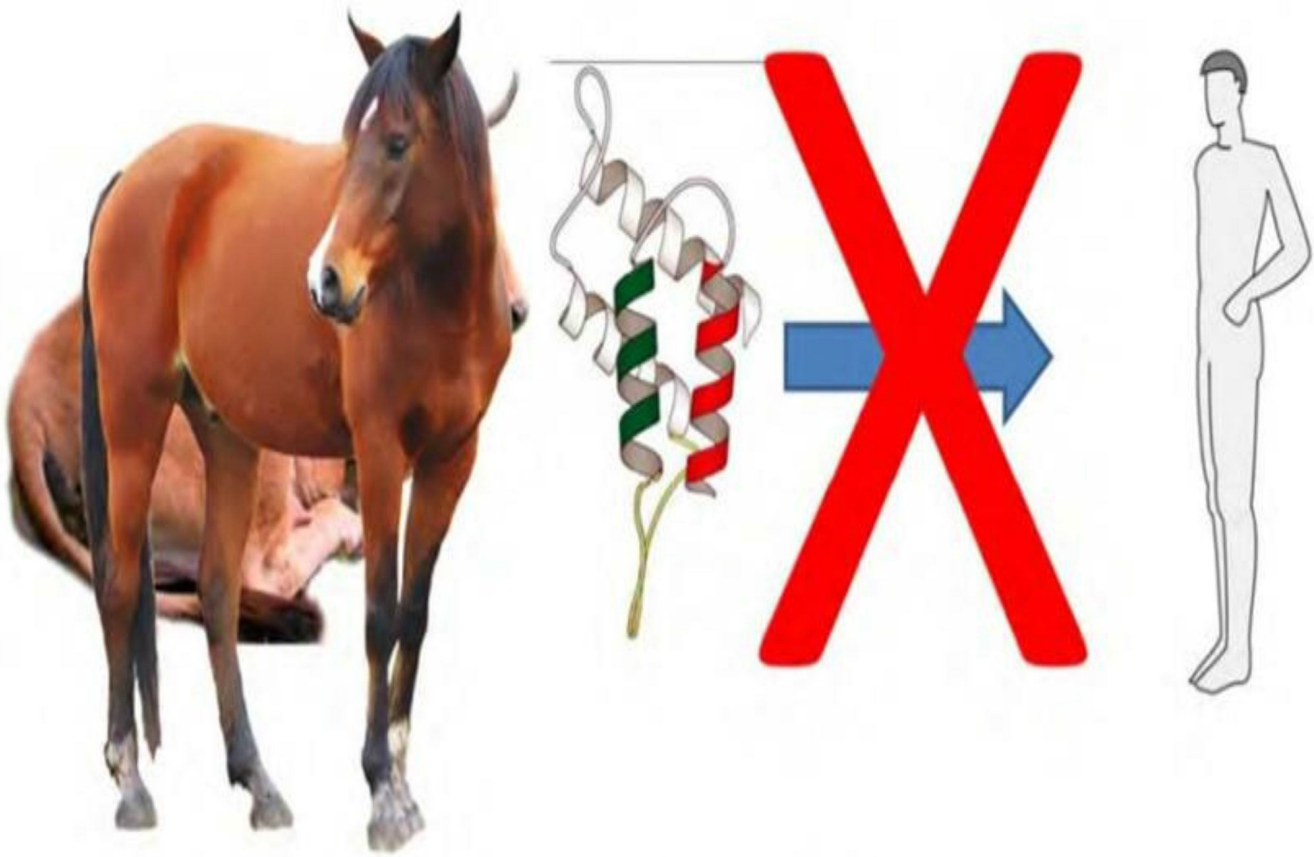
beta ray **sterilisation**

safety and **quality**

total **biocompatibility**

complete remodelling

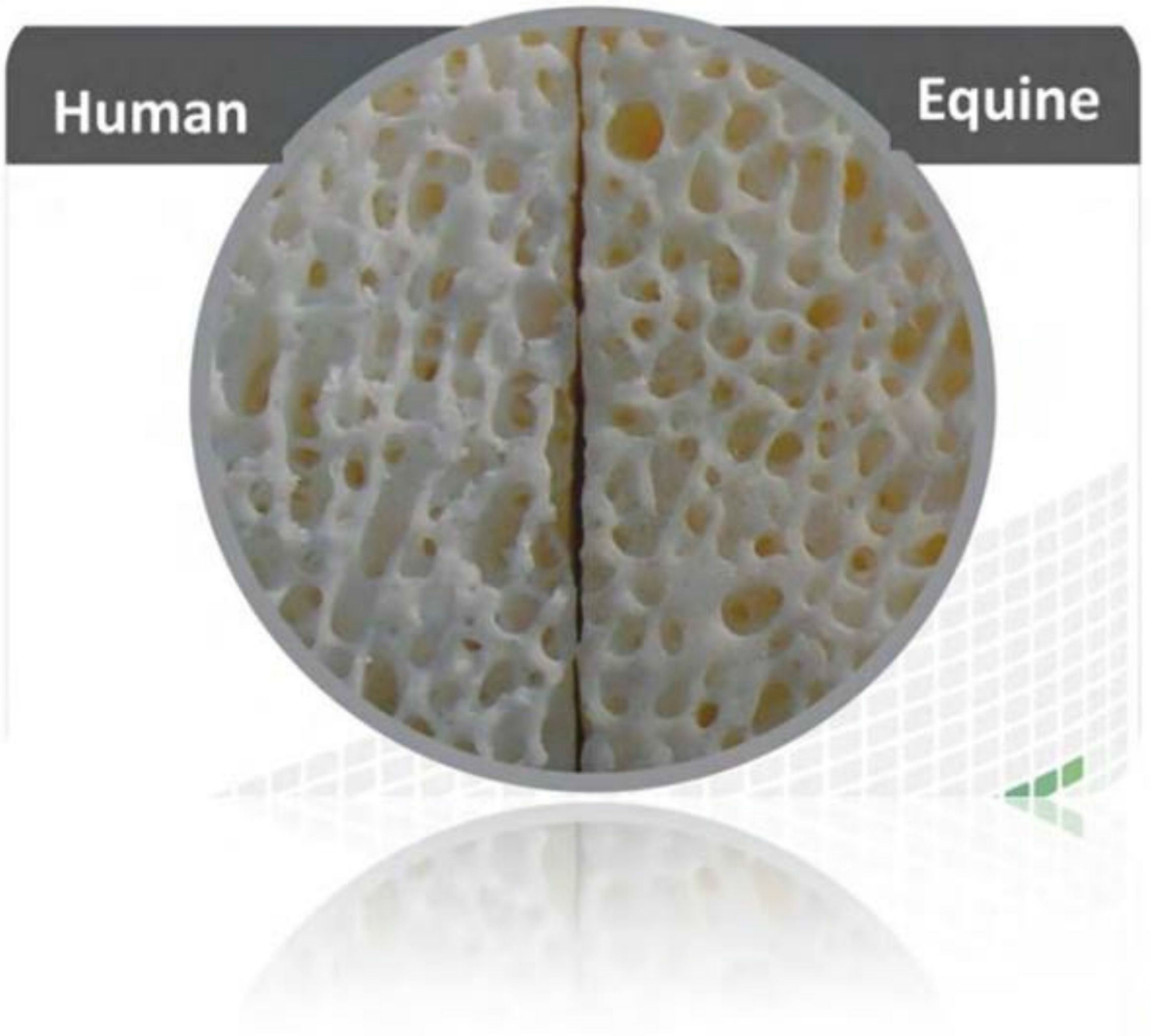
Bioteck - equine bone tissues



Equine considered safer even by:
European Directive 2003/32

There is also a safely reason if Bioteck uses equine tissues, There are not transmissible prions from equine to human, differently to cows (it is the case of BSE). Equine derived biomaterial are considered safer than bovine derived from this point of view, as is reported in the European Directive 2003/22

Bioteck - equine bone tissues



No macroscopic differences are present between human and equine bone as far as bone morphology is concerned.

natural bone (equine origin) substitutes



Features :

- > Cortical-cancellous or cancellous-only natural granular bone grafts
- > enzyme-deantigenated
- > showing bone collagen preserved and different granules sizes.

They can be used also for :

- > Periodontal defect (every type of)
- > Post-extractive sockets
- > Sinus lift (traditional Misch approach)
- > Sinus lift (Misch approach, Tulasne variation)
- > Sinus lift (crestal approach, Summers)

Bio-Gen[®] Bone granules

Bio-Gen granules are a total osteoclastic remodeling bone substitute, which can be used for all types of bone defects.

Clinical uses

- recommended for small size, four walls bone defects (cancellous)
- recommended for larger size bone defects (cortical)

Remodeling time :

- 4 - 6 months (cancellous)
- 8 - 12 months (cortical)

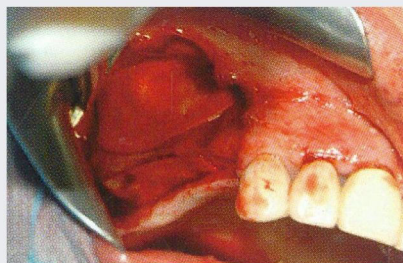
BGS-15	Bio-Gen cancellous granules	1 btl / 0.5 g ≈ 1 cc	250 - 1000 μm
BGS-05	Bio-Gen cancellous granules	6 btl / 0.5 g ≈ 1 cc	500 - 1000 μm
BGS-10	Bio-Gen cancellous granules	1 btl / 0.5 g ≈ 1 cc	1000 - 2000 μm
BGS-09	Bio-Gen cancellous granules	6 btl / 0.5 g ≈ 1 cc	1000 - 2000 μm
BGS-11	Bio-Gen cancellous granules	6 btl / 1 g ≈ 2 cc	1000 - 2000 μm
BGS-23	Bio-Gen cancellous granules	6 btl / 1 g ≈ 2 cc	2000 - 3000 μm
BGS-21	Bio-Gen cancellous granules	1 btl / 2 g ≈ 4 cc	250 - 1000 μm
BGS-20	Bio-Gen cancellous granules	1 btl / 2 g ≈ 4 cc	500 - 1000 μm
BGS-22	Bio-Gen cancellous granules	1 btl / 2 g ≈ 4 cc	1000 - 2000 μm
BGC-05	Bio-Gen cortical granules	6 btl / 0.5 g ≈ 1 cc	500 - 1000 μm
BGM-10	Bio-Gen cancellous/cortical granules	6 btl / 0.25 g ≈ 0.5 cc	500 - 1000 μm
BGM-05	Bio-Gen cancellous/cortical granules	6 btl / 0.5 g ≈ 1 cc	500 - 1000 μm
BGM-20	Bio-Gen cancellous/cortical granules	1 btl / 2 g ≈ 4 cc	500 - 1000 μm

They are indicated for medium-size reconstruction, in 4-3 walls cavities. The cancellous remodels in 4-6 months, the cortical one in 8-12 months (the remodeling time is approximate since, as a cell-mediated remodeling process occurs, the total substitution time depends on the beginning anatomical condition: the ratio between the receiving vital bone surface and the grafted volume). The cortical component needs more time to be remodeled given its greater density. Remodeling, anyway, is total (the bone substitute will new formed bone).

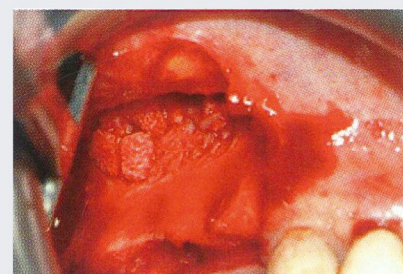
Example: using **BGM-20** granules to perform a sinus lift.



BGM-20 cancellous granules are mixed with autologous bone



The mixture is grafted in the sinus cavity



The access window is protected with a **BCG-01** collagen membrane

Courtesy
Dr. Danilo Di Stefano

OUR OTHER NATURAL BONE SUBSTITUTES

bio-gen
osteoplast
biocollagen
heart
DBM

granules, gel, putty and blocks
sheets and membranes
gel and membranes
pericardium membranes
granules, paste and gel

Mfg by:
BIOTECK S.p.A. - ITALY
www.bioteck.com
Distributed in INDIA by:
ARAMEX TRADING CO, 9-ASHOK NAGAR LUCKNOW
E-mail : aramex.sales@gmail.com
Ph. : 0522-4043583
(M) 9839668181, 9871078783

natural bone (equine origin) substitutes

BiOTECK[®]
The science of bone tissue



Bio-Gen[®] Mix Gel

Bio-Gen Mix Gel is a mixture consisting of Bio-Gen Mix cortical-cancellous granules and water-based gel. It is extremely practical and easy-to-handle. It can be applied directly in the graft site. Useful for all defect types.

- Clinical uses :**
- recommended for all types of defect
 - excellent for maxillary sinus lift (Summers)
 - excellent for very large periodontal defects

- Remodeling time :**
- 4 - 6 months (cancellous)
 - 8 - 12 months (cortical)

BGM-GEL05 Bio-Gen mix gel cancellous/cortical granules 1 Syr 0.5 ml

Features :

- > Natural cancellous and cortical bone granules
- > Enzyme-deantigenated, with preserved bone collagen, (as **BGM-05** or **BGM-20** already mixed with a water-based gel.

This syringe formulation (whose bone component corresponds to **BGM-05** or **BGM-20** features some operative advantages: being a ready-to-use mixture, all the steps that are needed to prepare standard granules can be avoided (hydration, mixing, bringing the material from the container to the grafting site). The bone substitute, in fact, can be extruded directly from the syringe into the grafting site. Indications are the same as for the granules. Moreover, grafting periodontal defects becomes easier, since granules can be extruded directly into the defect.

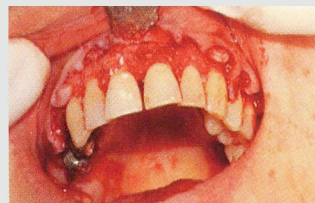
They can be used also for :

- > Regenerating intact post-extractive sockets in order to preserve the vestibular wall, anticipating implant placement
- > Sinus lift (Misch technique, also Tulasne variation)
- > Filling the space created during a split crest surgery
- > Vertical ridge augmentation, Ludovichetti technique with **Osteoplant** Cortical Flex
- > Filling gaps remaining after onlay grafts

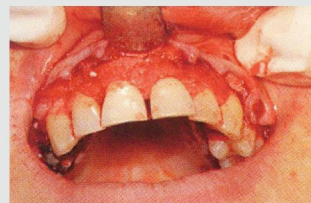
Example: using **BGM-GEL1** (Bio-Gen Mix Gel) together with **BCG-GEL1** (Biocollagen Gel) to fill periodontal defects.



Opening the flap. Intrasulcular incision, preserving the papillae.



Receiving bone is prepared, defects are filled with **Bio-Gen** Mix Gel



The graft is stabilized and covered with **Biocollagen** Collagen Gel.



Suture.

OUR OTHER NATURAL BONE SUBSTITUTES

bio-gen
osteoplant
biocollagen
heart
DBM

granules, gel, putty and blocks
sheets and membranes
gel and membranes
pericardium membranes
granules, paste and gel

Courtesy
Dr. Danilo Di Stefano

Mfg by:
BIOTECK S.p.A. - ITALY
www.bioteck.com
Distributed in INDIA by:
ARAMEX TRADING CO, 9-ASHOK NAGAR LUCKNOW
E-mail : aramex.sales@gmail.com
Ph. : 0522-4043583
(M) 9839668181, 9871078783

natural bone (equine origin) substitutes

BiOTECK[®]
The science of bone tissue



Bio-Gen[®] Putty

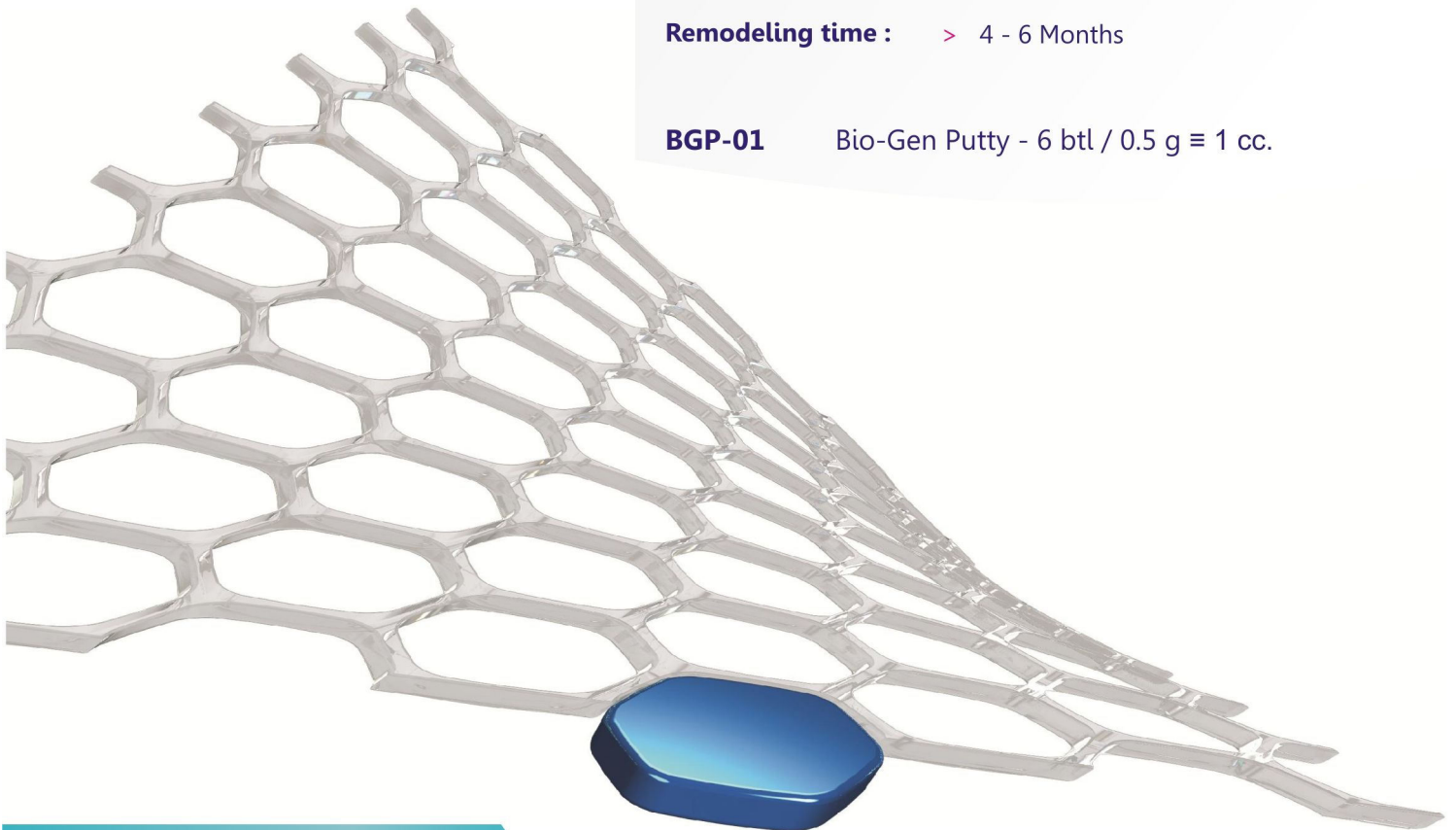
Bio-Gen Putty is a moldable paste made of cancellous Bio-Gen Granules and Collagen from Achilles' tendon. It's easily moldable, hemostatic and sticks well to bone walls.

Clinical uses :

- > recommended for small size, four walls bone defects
- > excellent for post-extractive sockets

Remodeling time : > 4 - 6 Months

BGP-01 Bio-Gen Putty - 6 btl / 0.5 g \equiv 1 cc.



OUR OTHER NATURAL BONE SUBSTITUTES

bio-gen	granules, gel, putty and blocks
osteoplant	sheets and membranes
biocollagen	gel and membranes
heart	pericardium membranes
DBM	grannules, paste and gel

Mfg by:
BIOTECK S.p.A. - ITALY
www.bioteck.com
Distributed in INDIA by:
ARAMEX TRADING CO, 9-ASHOK NAGAR LUCKNOW
E-mail : aramex.sales@gmail.com
Ph. : 0522-4043583
(M) 9839668181, 9871078783

natural bone (equine origin) substitutes



Bio Gen[®] Cancellous Blocks

Features: Natural, enzyme-deantigenated, bone collagen preserved, rigid blocks

BGB-11
Cancellous Blocks - 1 pc.
10 x 10 x 10 mm.

BGB-12
Cancellous Blocks - 1 pc.
10 x 10 x 20 mm.

BGB-30
Cancellous wedge - 1 pc.
20 x 10 x 5 mm. Final 2 mm.

The main feature of this block is that, since they show bone collagen preserved, they feature the same mechanical resistance to compression and elastic deformation of natural bone (superficial compression resistance is at least 300 kg/cm²). This means that these blocks can be shaped and drilled with rotating instruments, or fixed with screws or implants, without breaking (if thickness is not less than 3 mm).

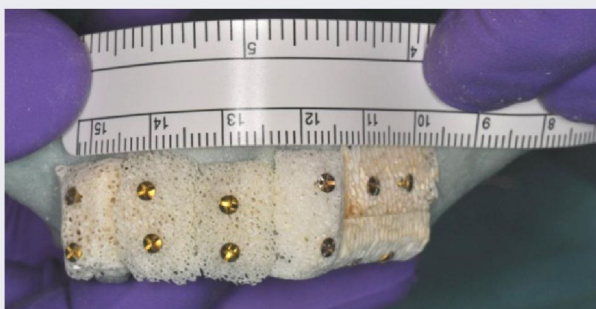
Indications:

1. Horizontal or horizontal and vertical onlay grafts on the upper jaw
2. Inlay grafts

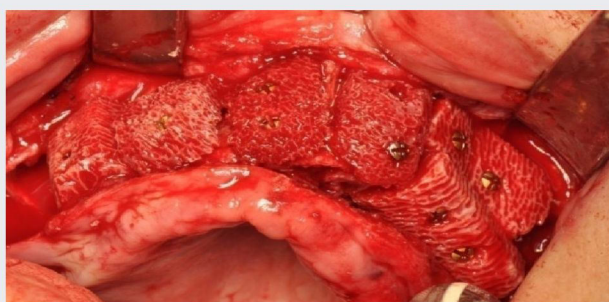
Example: **BGB-12** blocks (Bio Gen Cancellous Block) are applied to perform an onlay augmentation for a wide atrophy of the maxilla. Blocks are shaped over a stereolithographic model.



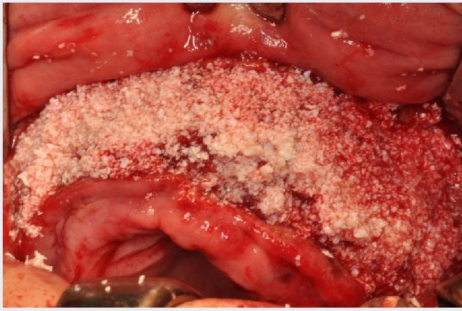
BGB-12 are shaped over a stereolithographic model: the regeneration is totally planned on the model some days before surgery



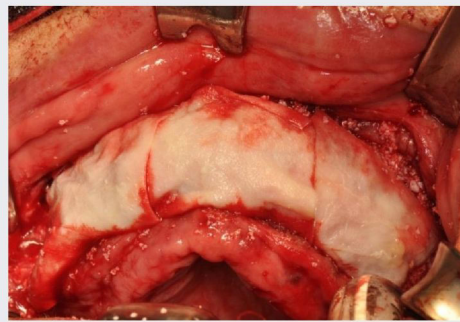
The reconstruction is complete. The blocks are removed from the model and set back to the manufacturing company for cleaning and sterilization. They will be ready, packed into a sterile double blister, on the day of surgery.



During surgery blocks are placed according to what had been planned on the stereolithographic model. Note that block edges have been beveled in order to avoid interferences with the soft tissues.



All the block reconstruction is covered with granules.



And protected with some resorbable membranes.

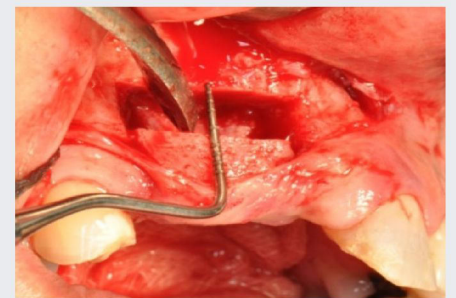
Example: Using **BGB-12** (Bio-Gen Blocco Spongiosa) (Bio-Gen Cancellous Block) is applied to perform an inlay graft in the upper jaw.



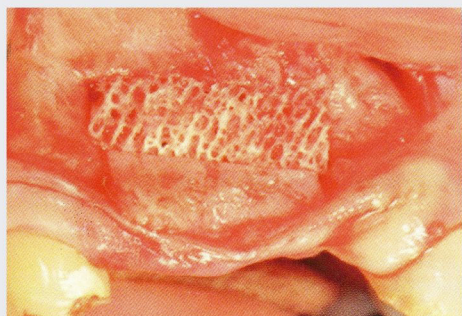
The ridge is cut on the vestibular side with a piezo osteotomy insert.



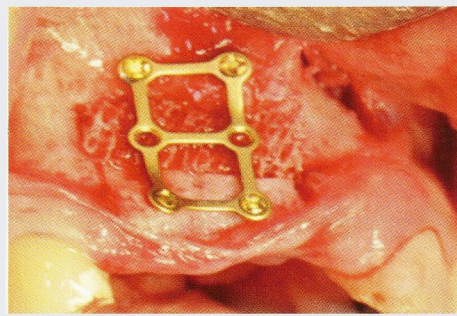
Incision is complete.



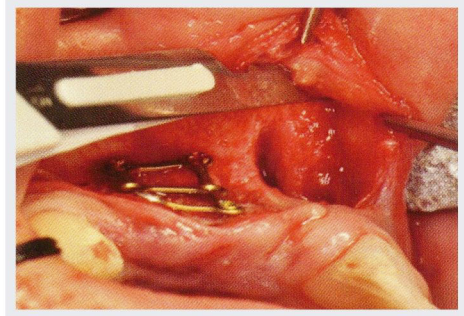
Bone is distracted, preparing it to receive the inlay graft.



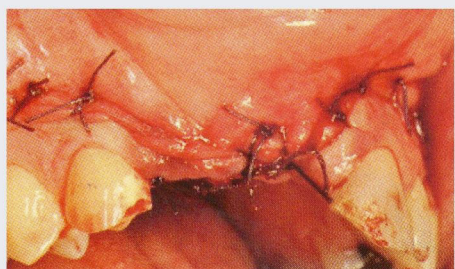
BGB-12 bone block is grafted as an inlay.



The block and the distracted bone portion are stabilized with a proper plaque.



The flap is released properly.



Suture.

Courtesy Dr. Roberto Pistilli

OUR OTHER NATURAL BONE SUBSTITUTES

bio-gen
osteoplant
biocollagen
heart
DBM

granules, gel, putty and blocks
sheets and membranes
gel and membranes
pericardium membranes
grannules, paste and gel

Mfg by:
BIOTECK S.p.A. - ITALY
www.bioteck.com
Distributed in INDIA by:
ARAMEX TRADING CO, 9-ASHOK NAGAR LUCKNOW
E-mail : aramex.sales@gmail.com
Ph. : 0522-4043583
(M) 9839668181, 9871078783

natural bone (equine origin) substitutes



Features :

- > Natural bone collagen-preserved,
- > Enzyme-deantigenated,
- > Cancellous bone.

It is partially demineralized to make it flexible.

Osteoplast[®] Flex cancellous bone sheet

Osteoplast Flex devices are flexible, easy-to-handle, cortical or cancellous bone sheets. Given their flexibility, they adapt perfectly to the receiving site minimizing the risk of defective angiogenesis. They fixation with screws or similar devices.

Clinical uses :

- > vertical ridge augmentation with concomitant implant placement (cortical sheet)
- > horizontal ridge augmentation (cancellous sheet)
- > sinus lift, to protect the Schneider membrane (Tulasne technique)

Remodeling time :

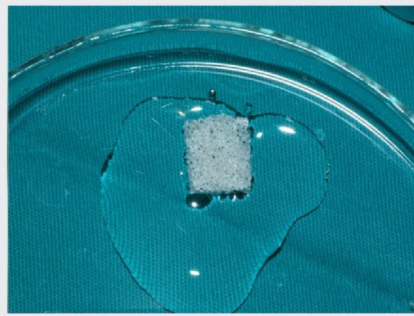
- > 4 - 6 months (cancellous)
- > 8 - 12 months (cortical)

OTC-C1 Osteoplast flex cortical sheets 1 pc 25 x 25 x 3 mm.

Example: using **OTC-S1** (Osteoplast Flexible Cancellous Sheet) during a sinus lift, to protect the Schneider membrane.



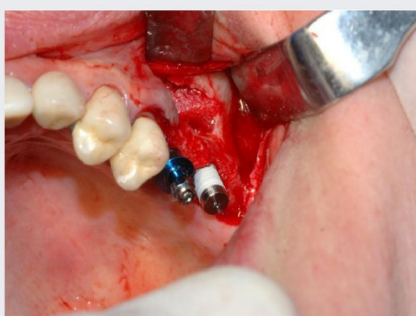
Lifting the bone window and the Schneider membrane



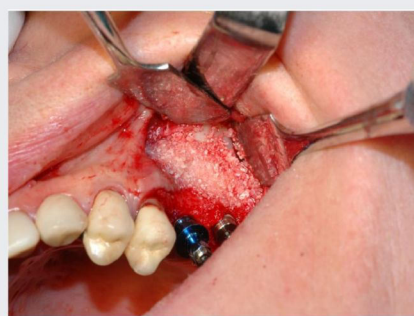
A piece of **OTC-S1** has been cut, and is being hydrated with physiologic solution.



The cancellous flexible sheet is placed below the sinus Membrane.



The sheet protects the sinus membrane from the following operations (graft of granules or implant placement).



The remaining volume is filled with **BGM-05** granules.



A **BGM-01** collagen membrane is placed to cover the access window after hydrating it.

Courtesy Dr. Maurizio Ludovichetti

OUR OTHER NATURAL BONE SUBSTITUTES

bio-gen
osteoplast
biocollagen
heart
DBM

granules, gel, putty and blocks
sheets and membranes
gel and membranes
pericardium membranes
granules, paste and gel

Mfg by:
BIOTECK S.p.A. - ITALY
www.bioteck.com
Distributed in INDIA by:
ARAMEX TRADING CO, 9-ASHOK NAGAR LUCKNOW
E-mail : aramex.sales@gmail.com
Ph. : 0522-4043583
(M) 9839668181, 9871078783

natural bone (equine origin) substitutes



Features :

- > Natural bone collagen-preserved,
- > Enzyme-deantigenated,
- > Cancellous bone.

It is partially demineralized to make it flexible.

Osteopant[®] Flex Cortical Sheet

Osteopant Flex devices are flexible, easy-to-handle, cortical or cancellous bone sheets. Given their flexibility, they adapt perfectly to the receiving site minimizing the risk of defective angiogenesis. They fixation with screws or similar devices.

Clinical uses :

- > vertical ridge augmentation with concomitant implant placement (cortical sheet)
- > horizontal ridge augmentation (cancellous sheet)
- > sinus lift, to protect the Schneider membrane (Tulasne technique)

Remodeling time :

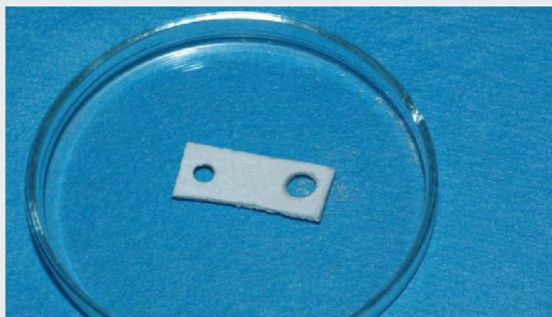
- > 4 - 6 months (cancellous)
- > 8 - 12 months (cortical)

OTC-C1 Osteopant flex cortical sheets 1 pc 25 x 25 x 2-2.5 mm

Example: using **OTC-C1** (Osteopant Flexible Cortical Sheet) for a lower jaw vertical augmentation and contemporary implant placement.



The cortical sheet is drilled, still dry (the position of the holes was replicated with a sterile template, from the position of the implant seats on the receiving bone, already prepared).



Two holes are prepared, corresponding to the size of the implants that are going to be placed.

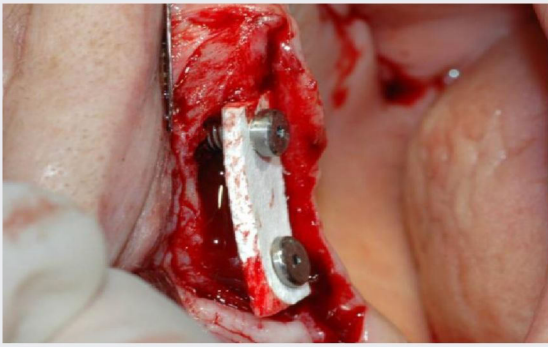
OUR OTHER NATURAL BONE SUBSTITUTES

bio-gen
osteopant
biocollagen
heart
DBM

granules, gel, putty and blocks
sheets and membranes
gel and membranes
pericardium membranes
granules, paste and gel

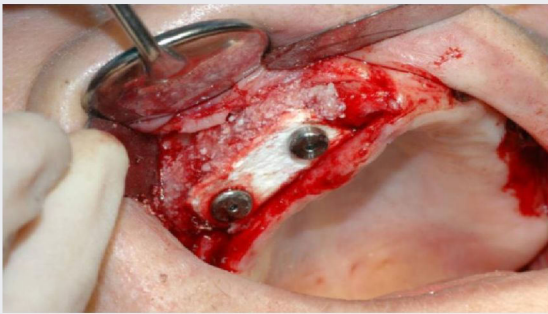
Courtesy Dr. Maurizio Ludovichetti

Mfg by:
BIOTECK S.p.A. - ITALY
www.bioteck.com
Distributed in INDIA by:
ARAMEX TRADING CO, 9-ASHOK NAGAR LUCKNOW
E-mail : aramex.sales@gmail.com
Ph. : 0522-4043583
(M) 9839668181, 9871078783

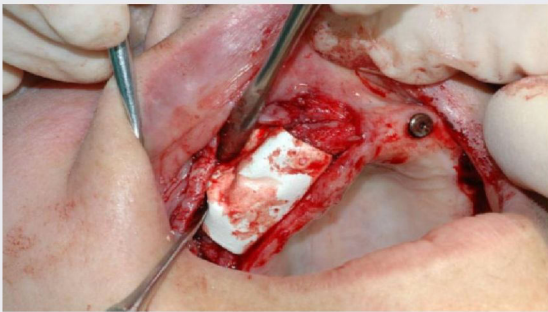


The sheet is fixed with the implants (the first implant is positioned through the sheet and then on the receiving bone; then the second implant is placed).

The sheet is stable thanks to the use of two cover screws featuring a large size than the implants diameter.

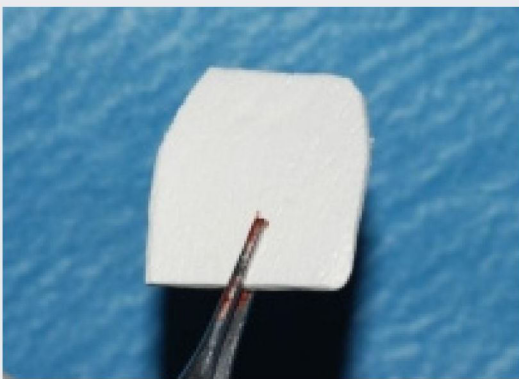


The space under the sheet is filled with a granular mixture (**BGM-05** and autologous bone collected with a scraper). Sharp edges are eliminated to avoid troubles with the soft tissues (not showed).

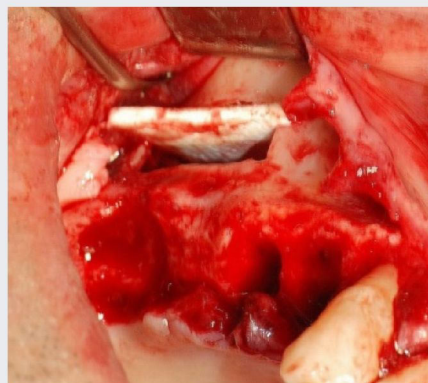


All the graft is covered with a Heart **HRT-002** pericardium membrane.

Example: using **OTC-C1 (BIOTECK Flexible Cortical Sheet)** to protect the Schneider membrane, during a sinus lift, mimicking the Tulasne technique.



The flexible cortical sheet is shaped, without hydrating it.



The sheet is positioned to protect the sinus membrane. The sheet is still dry.

Note that a) the width between the two slot's extremities is a little smaller than the sheet's width (to allow a better stabilization of the sheet itself and b) [not visible] that the sheet must be pushed in up to touching the nasal wall of the sinus. The part that still protrudes out of the window will be eliminated with a rotating instrument Filling of the remaining volume is performed as usual.

OUR OTHER NATURAL BONE SUBSTITUTES

bio-gen
osteoplant
biocollagen
heart
DBM

granules, gel, putty and blocks
sheets and membranes
gel and membranes
pericardium membranes
grannules, paste and gel

Courtesy Dr. Maurizio Ludovichetti

Mfg by:
BIOTECK S.p.A. - ITALY
www.bioteck.com
Distributed in INDIA by:
ARAMEX TRADING CO, 9-ASHOK NAGAR LUCKNOW
E-mail : aramex.sales@gmail.com
Ph. : 0522-4043583
(M) 9839668181, 9871078783

natural bone (equine origin) substitutes



Biocollagen[®] Collagen membrane

Biocollagen is a membrane made of Achilles' tendon collagen for guided bone regeneration. Its protection time is 4-6 weeks, therefore it is indicated to cover small grafted sites only.

Clinical uses :

- > to protect small grafted sites
- > to stabilize granular grafts

Protection time : > 4 - 6 weeks

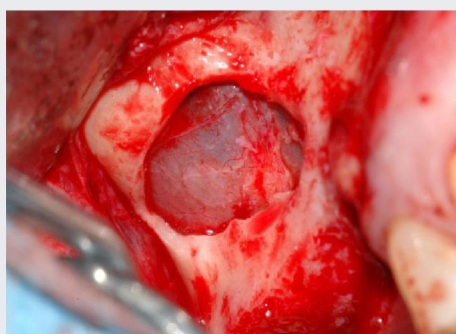
Features :

> Resorbable membrane made of collagen from natural Achilles' tendon.

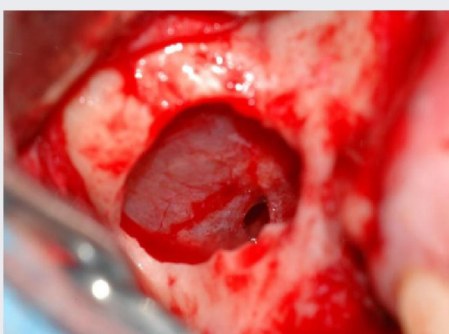
BCG-01 Collagen Membrane - 6 btl. 25 x 25 x 0.2 mm

BCG-04 Collagen Membrane - 1 pc. 40 x 30 x 0.2 mm

Example: using **BCG-01** (Biocollagen collagen membrane) to repair a little tear of the Schneider membrane.



The sinus membrane is detached during a sinus lift.

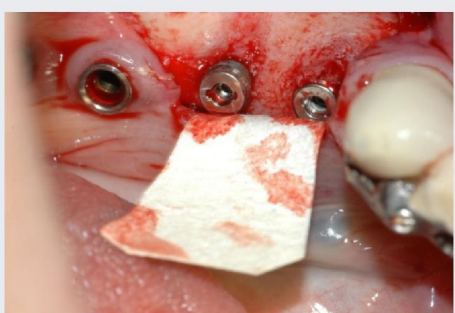


The membrane shows a little tear.

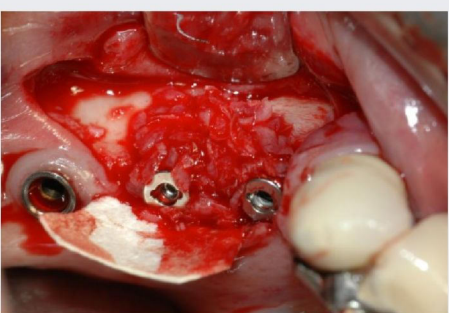


A collagen **BCG-01** membrane is placed to repair the tear. Note that, in order to facilitate its adhesion, it is placed still dry.

Example: using **BCG-01** (Biocollagen collagen membrane), still dry, as a wall to keep the granules in the right position.



The membrane still dry and shaped, is placed under the flap.



The granules are placed exploiting the membrane as a well.

OUR OTHER NATURAL BONE SUBSTITUTES

bio-gen
osteoplant
biocollagen
heart
DBM

granules, gel, putty and blocks
sheets and membranes
gel and membranes
pericardium membranes
granules, paste and gel

Courtesy Dr. Danilo Di Stefano.

Mfg by:
BIOTECK S.p.A. - ITALY
www.bioteck.com
Distributed in INDIA by:
ARAMEX TRADING CO, 9-ASHOK NAGAR LUCKNOW
E-mail : aramex.sales@gmail.com
Ph. : 0522-4043583
(M) 9839668181, 9871078783

natural bone (equine origin) substitutes



Biocollagen[®] Collagen gel

Biocollagen Gel is a resorbable collagen gel, made of collagen from natural Achilles' tendon and water-based gel. It may be used in place of traditional collagen membranes to protect small periodontal defects. It works as a hemostatic and is extremely easy-to-handle.

- Clinical uses :**
- > to protect small peri-implant grafted sites (less than 3 threads exposed)
 - > to protect small periodontal grafted sites

- Protection time :**
- > 4 - 6 weeks

BCG-GEL1 Biocollagen Gel collagen gel 1 syr 1cc

Features :

- > Resorbable collagen gel, made of collagen from natural Achilles' tendon and water-based gel.

Example: using **BCG-GEL1** (Biocollagen Collagen Gel) to protect a periodontal defect grafted with BGM-Gel1 (Bio-Gen Mix-Gel).



The two products: **Bio-Gen Mix Gel (BGM-GEL1)**, top) and Biocollagen Collagen Gel (**BGM-GEL1**) bottom, Usually the two products are extruded directly from the syringe into the grafting site (this picture is showed for sake of explanation).



Periodontal defects.



Filling one of the defects with **Bio-Gen Mix Gel (BGM-GEL1)**.



The graft is covered with **Biocollagen Collagen Gel (BCG-GEL1)**. Suture will be then performed following standard procedures.

Courtesy Dr. Maurizio Ludovichetti.

OUR OTHER NATURAL BONE SUBSTITUTES

bio-gen
osteoplant
biocollagen
heart
DBM

granules, gel, putty and blocks
sheets and membranes
gel and membranes
pericardium membranes
grannules, paste and gel

Mfg by:
BIOTECK S.p.A. - ITALY
www.bioteck.com
Distributed in INDIA by:
ARAMEX TRADING CO, 9-ASHOK NAGAR LUCKNOW
E-mail : aramex.sales@gmail.com
Ph. : 0522-4043583
(M) 9839668181, 9871078783

natural bone(equine origin) substitutes



Heart[®] Pericardium Membrane

The **protection time** for this kind of membrane is **3-4 months**.

Such a long protection time is due to the fact that the treatment the pericardium undergoes to achieve these membranes does not alter the tridimensional structure, and the bonds among the collagen and elastin fibers the pericardium is made of. Thus, the time needed for degradation is longer. This membrane is, therefore, structured and features a peculiar mechanical resistance to tearing. **It can be sutured** without tearing.

This membrane needs not fixation; its adhesiveness is only slightly smaller than the one of the classic collagen membranes.

It's the best choice for most bone regeneration surgeries.

HRT-001 - Pericardium membrane - 1 pc. 30 x 25 x 0.2 mm.

HRT-002 - Pericardium membrane - 1 pc. 50 x 30 x 0.2 mm.

HRT-003 - Pericardium membrane - 2 pc. 15 x 20 x 0.2 mm.

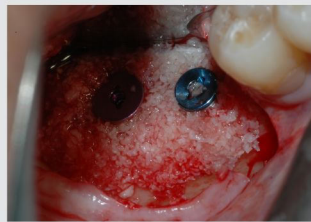
Features

- > slow reabsorption time
- > resistant and elastic
- > long protection time
- > practical and easy-to-handle
- > simple to suture (sutureable)

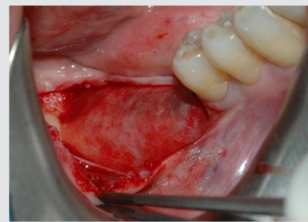
Example: using **HRT-001** (Heart pericardium membrane) to protect a peri-implant defect grafted with **BGM-05** granules (cortical-cancellous bone granules, sized 0.5-1 mm).



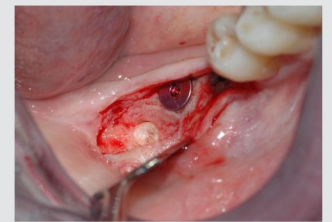
The implants show a small exposition, that could compromise the esthetic of the final restoration.



The two defects are filled with **BGM-05** granules (cortical-cancellous bone granules, sized 0.5-1 mm).

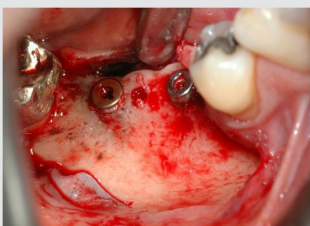


The reconstruction is protected with a HRT-001 pericardium membrane.



Second look (4 months). The picture shows also the collection of a bone core for the histological tests.

Example: using **HRT-001** (Heart pericardium membrane) to protect a graft with granules to perform a lateral **GBR**.



Two implants are placed, but a large lateral defect is present.



The defect is filled with a mixture of cortical-cancellous bone granules BGM-05 and autologous bone, collected with a scraper.



The defect is protected with a HRT-001 Heart pericardium membrane.



Second look (6 months.)

OUR OTHER NATURAL BONE SUBSTITUTES

bio-gen
osteoplast
biocollagen
heart
DBM

granules, gel, putty and blocks
sheets and membranes
gel and membranes
pericardium membranes
granules, paste and gel

Courtesy Dr. Danilo Di Stefano.

Mfg by:
BIOTECK S.p.A. - ITALY
www.bioteck.com
Distributed in INDIA by:
ARAMEX TRADING CO, 9-ASHOK NAGAR LUCKNOW
E-mail : aramex.sales@gmail.com
Ph. : 0522-4043583
(M) 9839668181, 9871078783

natural bone (equine origin) substitutes



Osteoplast[®] Cortical Membrane

Osteoplast Cortical Membrane is a flexible cortical bone sheet that works as a long lasting (> 6 months) resorbable membrane.

- Clinical uses :**
- > to protect grafted sites where regeneration is expected to be slow (horizontal and vertical augmentation)
 - > to maintain bone profile (vestibular ridge reconstruction)
- Protection time :**
- > 6 months (protection)
 - > 8 - 14 months (total remodeling)

Features :

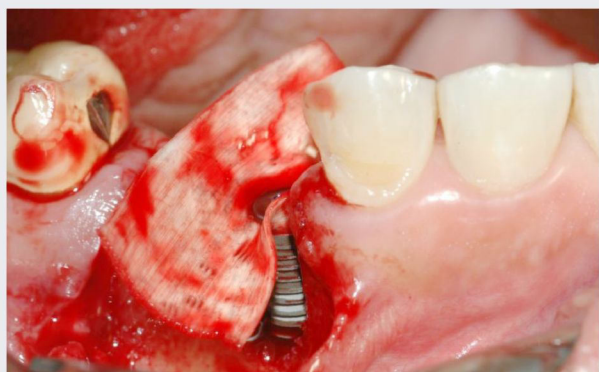
- > Long lasting natural cortical bone membrane.

OTC-CE Cortical membrane Elite - 1 pc 25 x 25 x 0.2 mm
OTC-CE2 Cortical membrane Elite - 1 pc 50 x 25 x 0.2 mm

Example: using **OTC-CE** (Osteoplast Cortical Membrane) to protect a granular graft, performed with **BGM-05** to reconstruct a severe peri-implant defect.



A severe peri-implant defect. The implant has primary stability, but it is highly exposed (both on the vestibular and the palatal side).



A cortical OTC-CE membrane is placed, before the granules, stabilizing it with the implant cover screw. The edges of the membrane will be placed under the flap borders.

OUR OTHER NATURAL BONE SUBSTITUTES

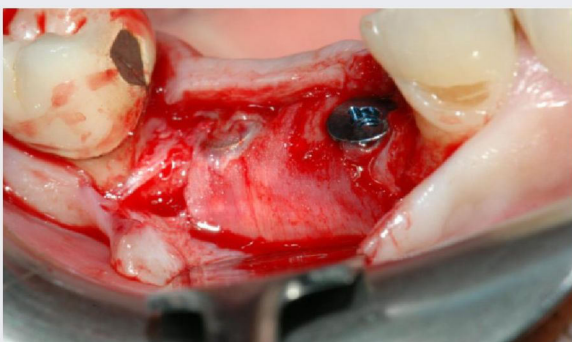
bio-gen granules, gel, putty and blocks
osteoplast sheets and membranes
biocollagen gel and membranes
heart pericardium membranes
DBM granules, paste and gel

Mfg by:
BIOTECK S.p.A. - ITALY
www.bioteck.com
Distributed in INDIA by:
ARAMEX TRADING CO, 9-ASHOK NAGAR LUCKNOW
E-mail : aramex.sales@gmail.com
Ph. : 0522-4043583
(M) 9839668181, 9871078783

natural bone (equine origin) substitutes

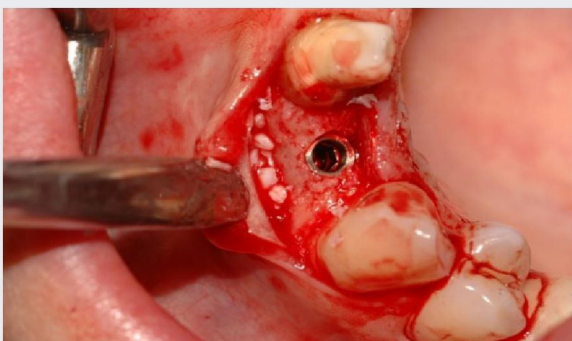


The defect is filled with **BGM-05** (cortical-cancellous bone granules sized 0.5-1 mm).

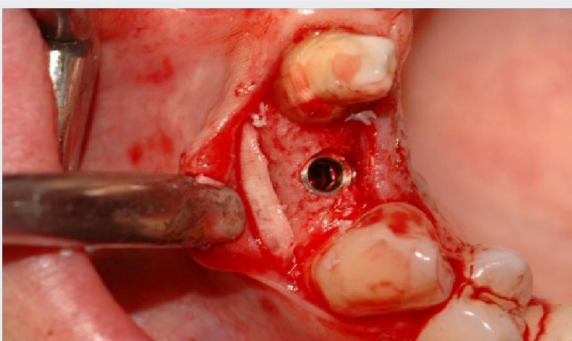


Second look (6 months). The membrane is still present and undergoing remodeling. The surgical opening is so wide since a portion of the membrane will be removed to perform histological tests.

Example: using **OTC-CE** (Cortical Membrane) to regenerate a vestibular defects.



The cortical membrane is placed under the flap, creating a wall containing the granules graft.
If the membrane is stable, and held still by the flap, fixation can not be necessary.



When the filling is complete, the membrane acts as a new vestibular wall.

OUR OTHER NATURAL BONE SUBSTITUTES

bio-gen
osteoplant
biocollagen
heart
DBM

granules, gel, putty and blocks
sheets and membranes
gel and membranes
pericardium membranes
grannules, paste and gel

Mfg by:
BIOTECK S.p.A. - ITALY
www.bioteck.com
Distributed in INDIA by:
ARAMEX TRADING CO, 9-ASHOK NAGAR LUCKNOW
E-mail : aramex.sales@gmail.com
Ph. : 0522-4043583
(M) 9839668181, 9871078783

natural bone (equine origin) substitutes

BIOTECK[®]
The science of bone tissue



Osteoplast[®] Osteopromoters

Bioteck Activagen and Angiosted are osteopromotive bone grafts containing Demineralized Bone Matrix (DBM).

Demineralization process completely exposes type I collagen and organic extracellular matrix, thus enhancing the bone healing process.

Clinical uses : > in combination with Bioteck bone substitutes in order to improve the biological conditions favoring bone regeneration

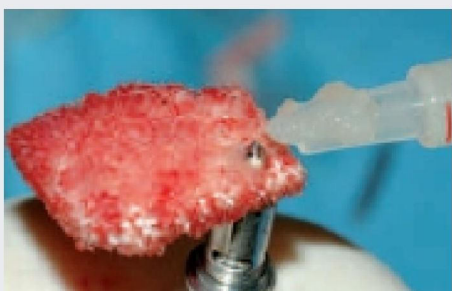
OGS-AC5 DBM Granules - 3 btl / 0.25 cc.

OGS-GEL1 DBM Gel- 3 syr / 1 ml

Features :

> Natural demineralized bone matrixes showing osteopromoting effects.

Example: using **OGS-GEL1** (Osteoplast Angiostad) on **OTC-S1** sheet (Osteoplast Flex Cancellous Sheet) for an onlay lateral augmentation.



The osteopromoter **OGS-GEL1** (Osteoplast Angiostad) is spread over an **OTC-S1** sheet (Osteoplast Flex Cancellous sheet) on the side that will be in contact with the receiving bone surface (there's blood over the sheet since the surgeon already tried to fit it over the defect).

Example: using **OGS-AC5** (Osteoplast Activagen) with **BGM-05** (Osteoplast Cortical-cancellous granules).



The osteopromoter **OGS-AC5** (**OGS-AC5** (Osteoplast Activagen) is placed into the sterile container to be mixed with the granules before hydration with saline.



Osteopromoter (bottom) and granules (top). Note that the quantity of osteopromoter is still not optimal: another vial should be used to get a volume approximately equal to the one of the granules. The mixture will be then hydrated and grafted as usual.

OUR OTHER NATURAL BONE SUBSTITUTES

bio-gen
osteoplast
biocollagen
heart
DBM

granules, gel, putty and blocks
sheets and membranes
gel and membranes
pericardium membranes
granules, paste and gel

Courtesy Dr. Danilo Di Stefano.

Mfg by:
BIOTECK S.p.A. - ITALY
www.bioteck.com
Distributed in INDIA by:
ARAMEX TRADING CO, 9-ASHOK NAGAR LUCKNOW
E-mail : aramex.sales@gmail.com
Ph. : 0522-4043583
(M) 9839668181, 9871078783

BIOTECK®

The science of bone tissue

Bioteck S.p.A.

Headquarter:

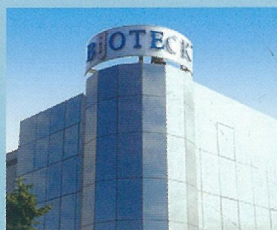
Via E. Fermi, 49 - 36057 Arcugnano (VI) - Italy
Phone: +39 0444 289366 - Fax: +39 0444 285272
info@bioteck.com - www.bioteck.com

Processing Lab:

Via Giovanni Agnelli, 3
10020 Riva Presso Chieri (TO) - Italy



Bioteck is a leading company in the manufacturing of heterologous grafts for Orthopedic Surgery and Maxillofacial and Oral Surgery. Founded in 1995, it has enjoyed constant growth thanks to its exclusive enzymatic deantigenation system at 37°C, which permits to achieve entirely safe grafts, preserving the original biological and biomechanical features of mammal bone.



A Guarantee of Quality and Safety



CE
0373



Bioteck manufactures and distributes its bone substitutes and membranes for Maxillofacial and Oral Surgery in more than 65 Countries:

- BIO-GEN®** - natural osteoconductive bone substitutes featuring denatured bone collagen.
- BIOCOLLAGEN®** - natural collagen membranes, also available as gels, for guided bone regeneration.
- OSTEOPANT®** - natural osteoconductive bone substitutes featuring preserved, native bone collagen.

BIO-GEN®, BIOCOLLAGEN® and OSTEOPANT® are Bioteck S.p.A. registered trademarks.

For more information:



ISO 9001



ISO 13485