

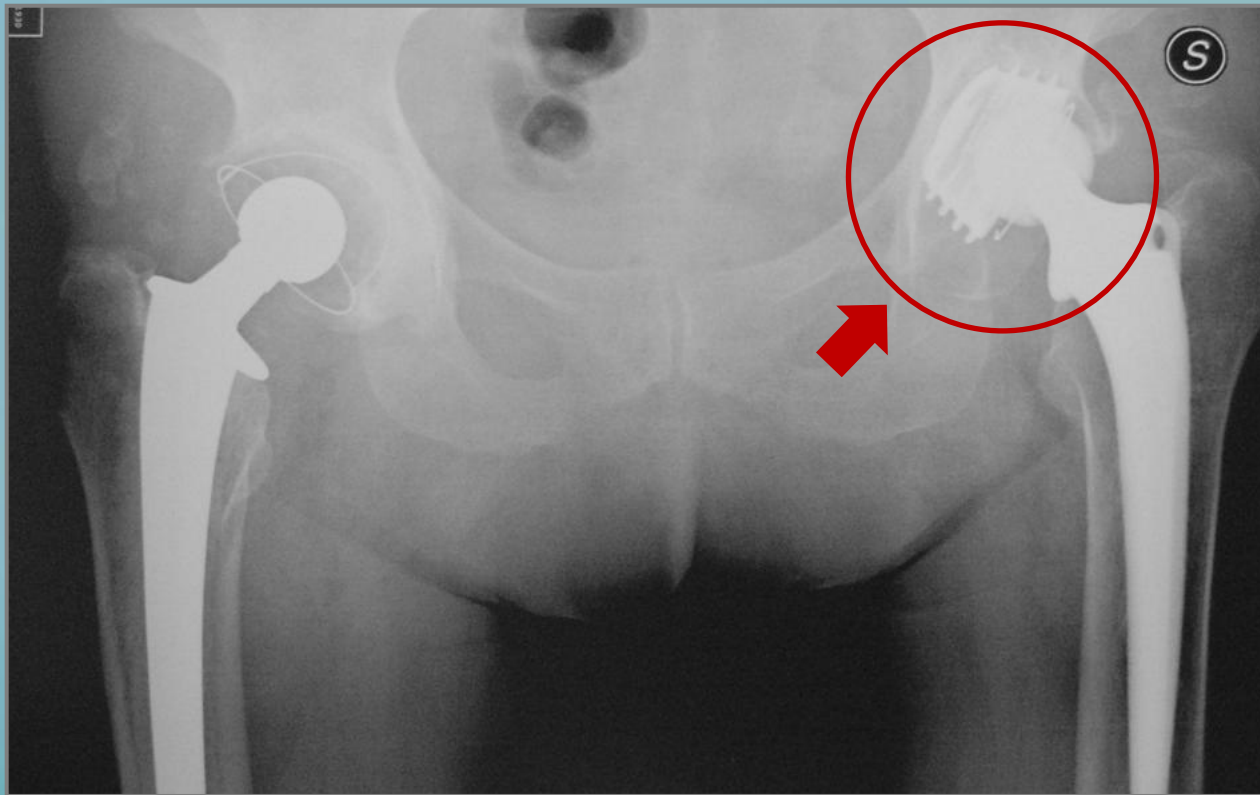


BIOTECK BONE GRAFTS
IN HIP REVISION SURGERY

Fabrizio Raimondi
Business Development Manager

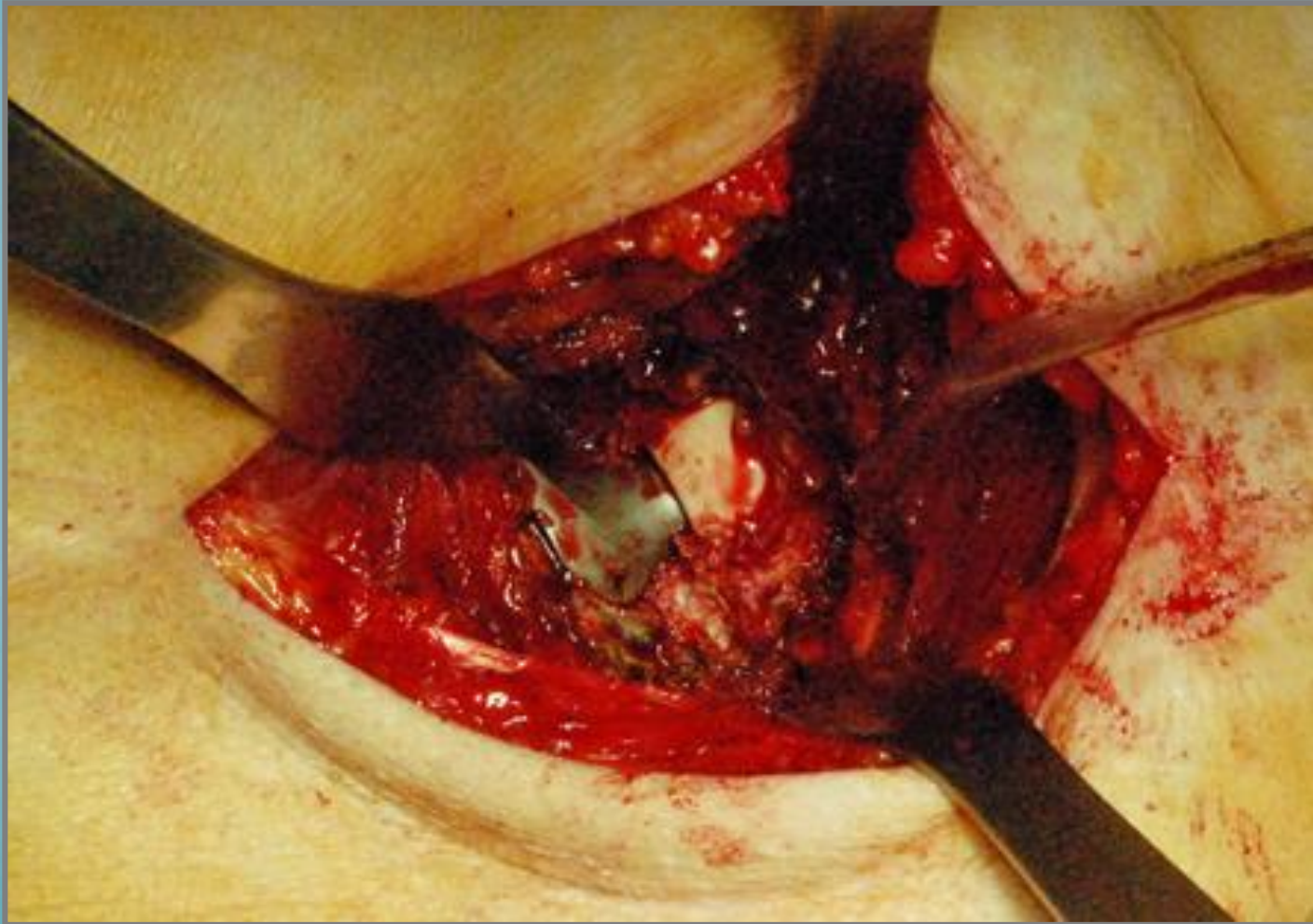
TOTAL HIP REVISION – PRE-OP RX

A screwed cup moved up creating a large bone defect



P.B. ♀ 77 years old

REMOVAL OF THE FEMORAL STEM



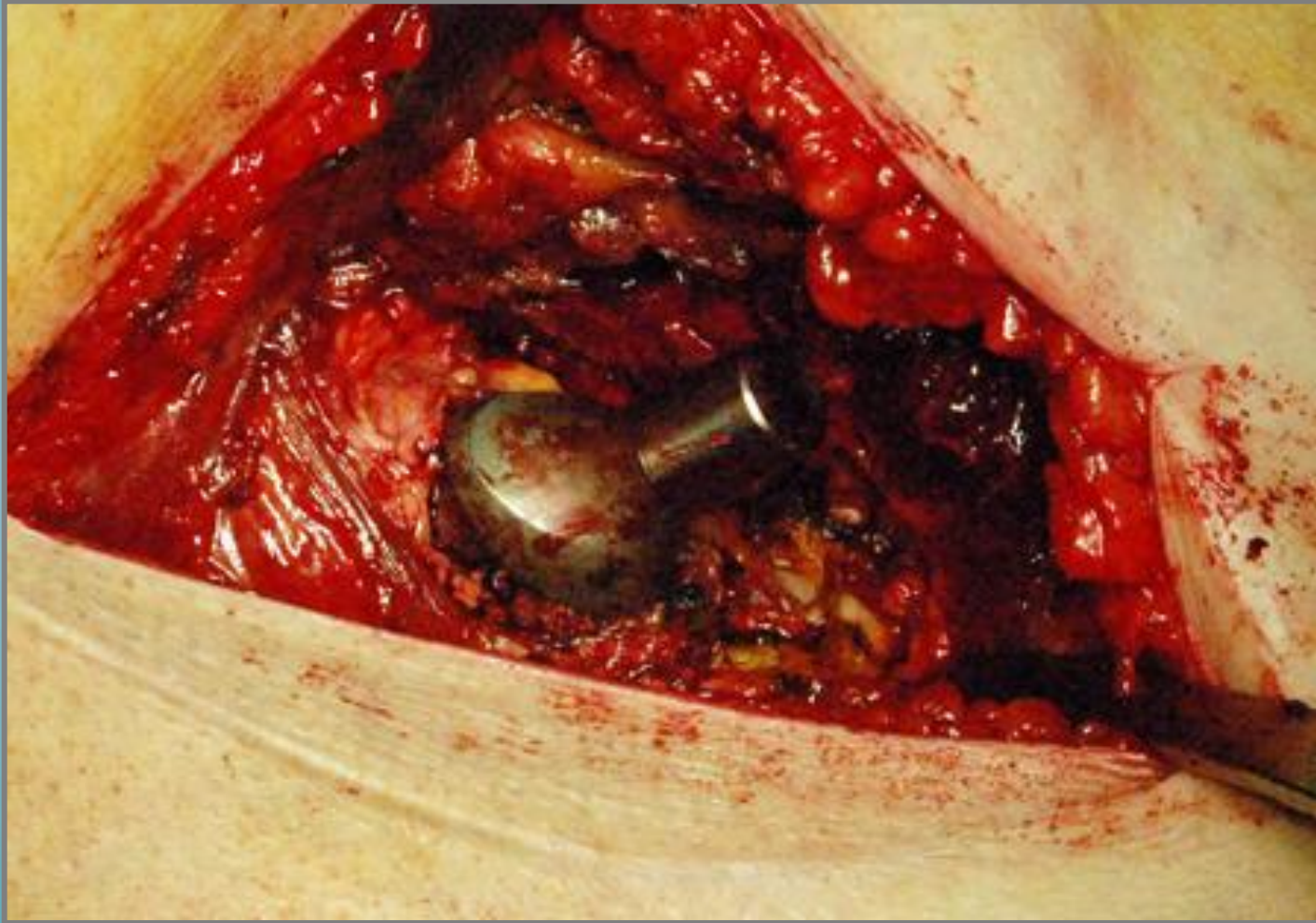
Exposure of the femoral prosthesis

REMOVAL OF THE FEMORAL STEM



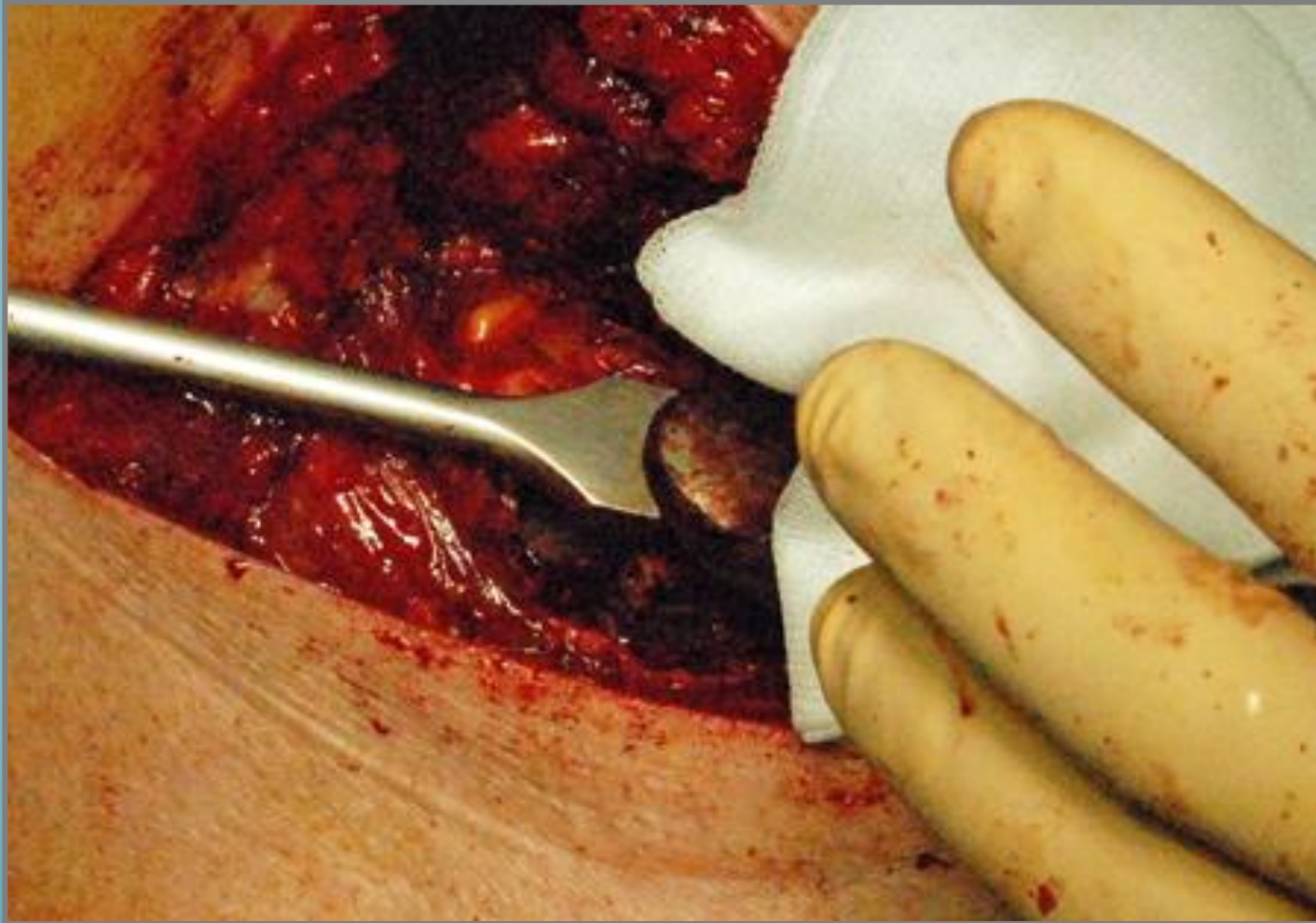
Luxation of the prosthesis

REMOVAL OF THE FEMORAL STEM



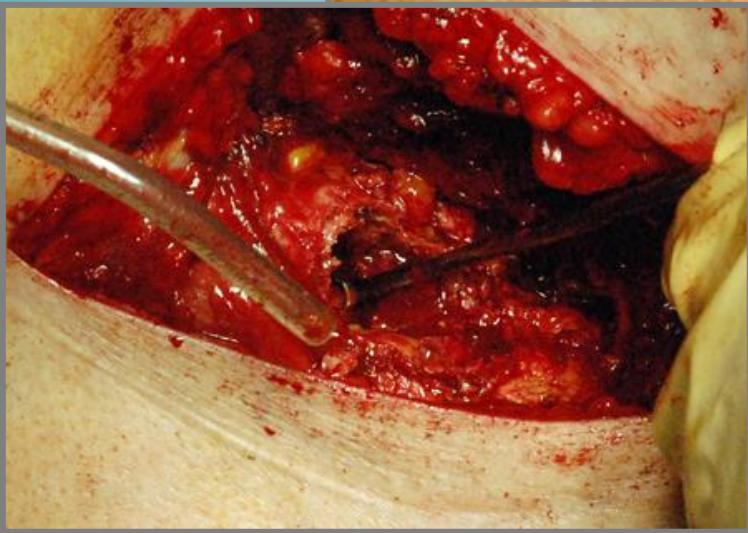
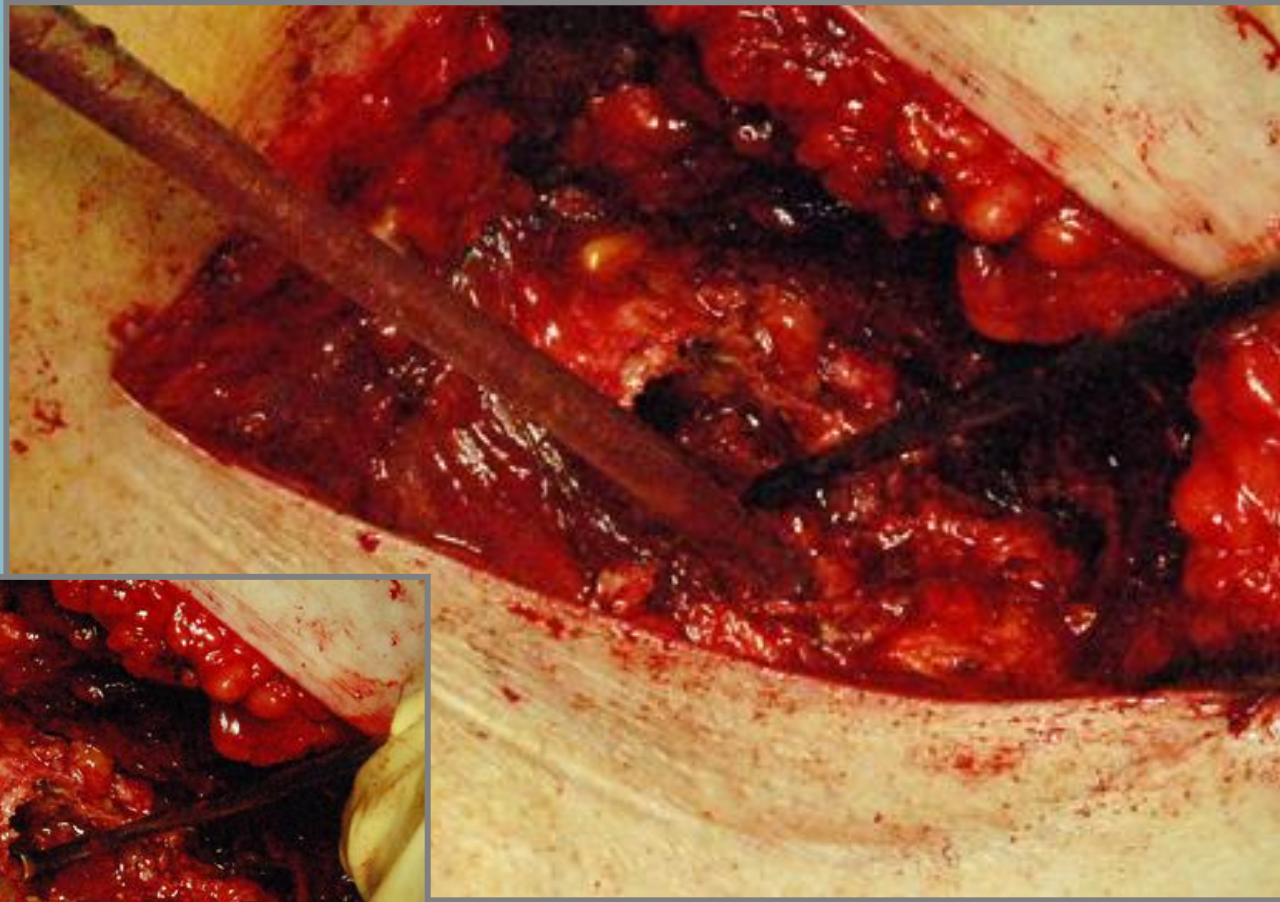
The ceramic head has been removed

REMOVAL OF THE FEMORAL STEM



Removal of the stem

REMOVAL OF THE FEMORAL STEM



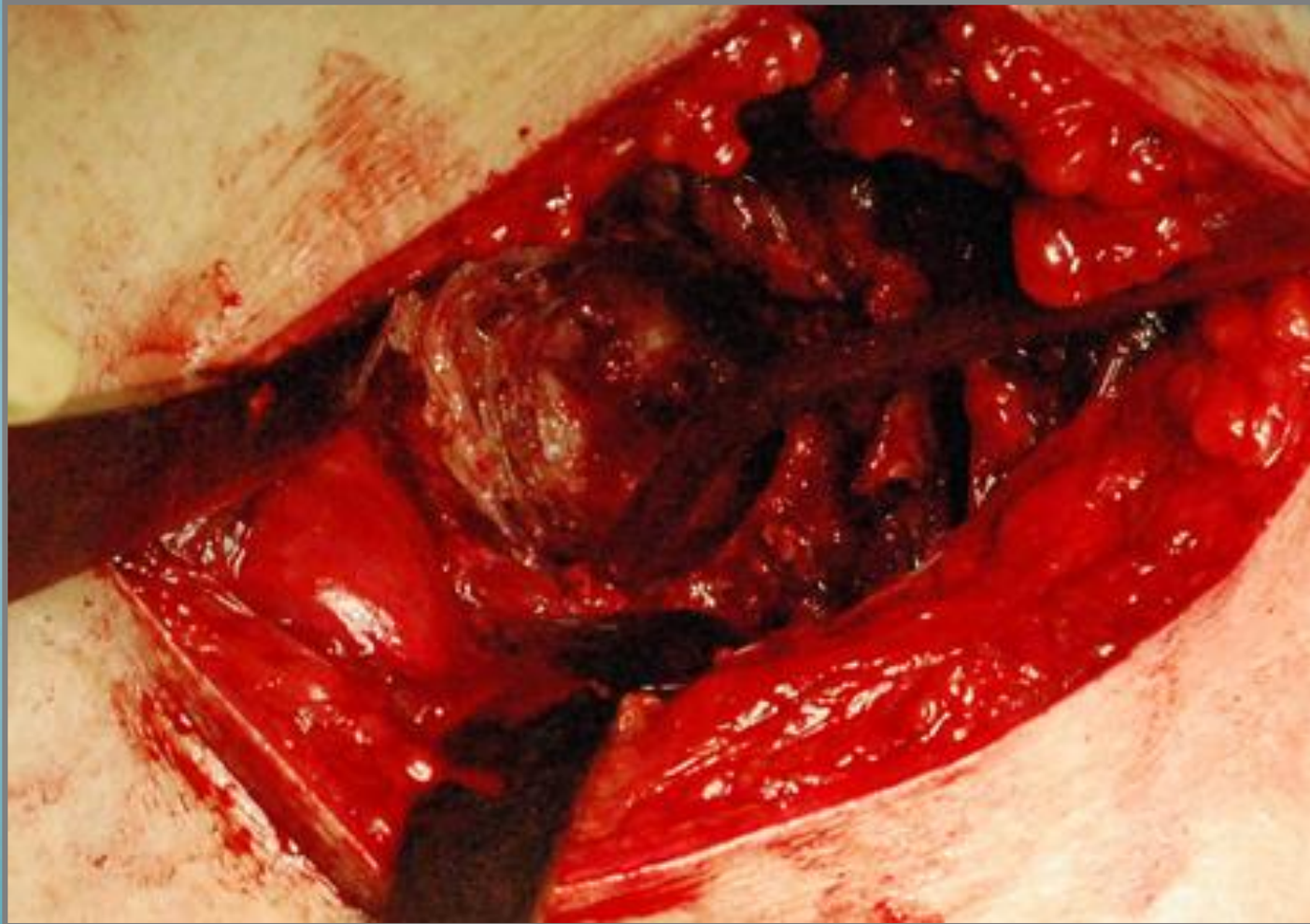
← removal of the fibrous tissue

REMOVAL OF THE SCREWED CUP



Exposure of the metal cup

REMOVAL OF THE SCREWED CUP



Exposure of the acetabular bone defect

PROSTHESIS COMPONENTS REMOVED



BONE GRAFT PREPARATION



Osteoplast Acetabular Mat

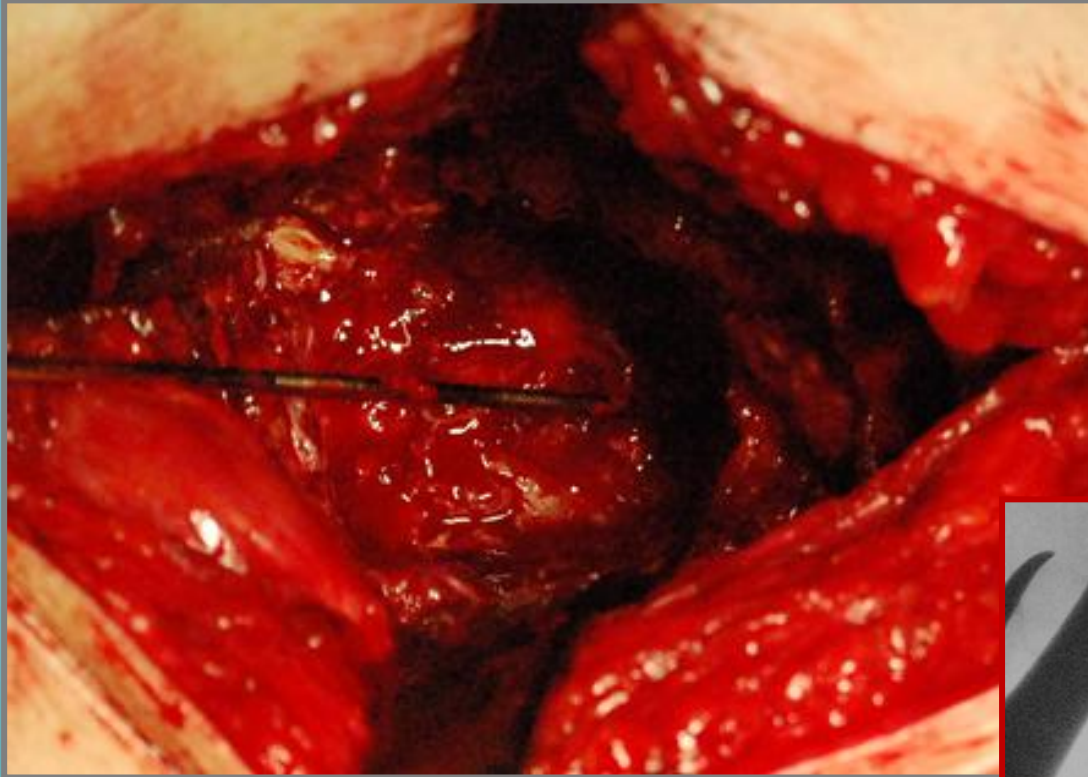


Angiostad

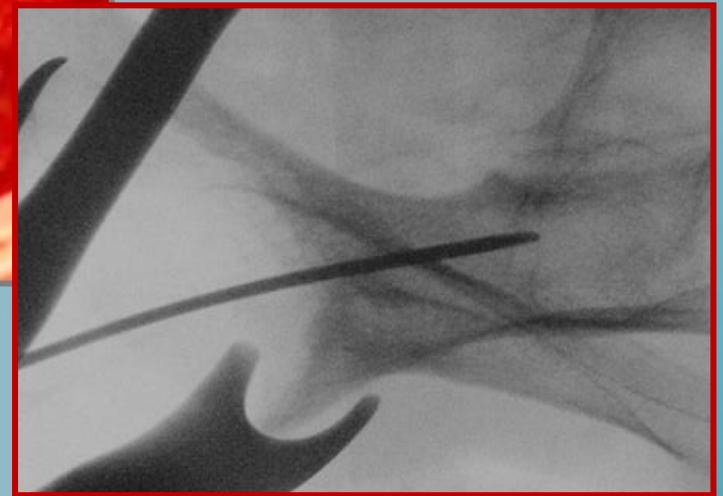


The graft is rehydrated
in saline solution for 5 min

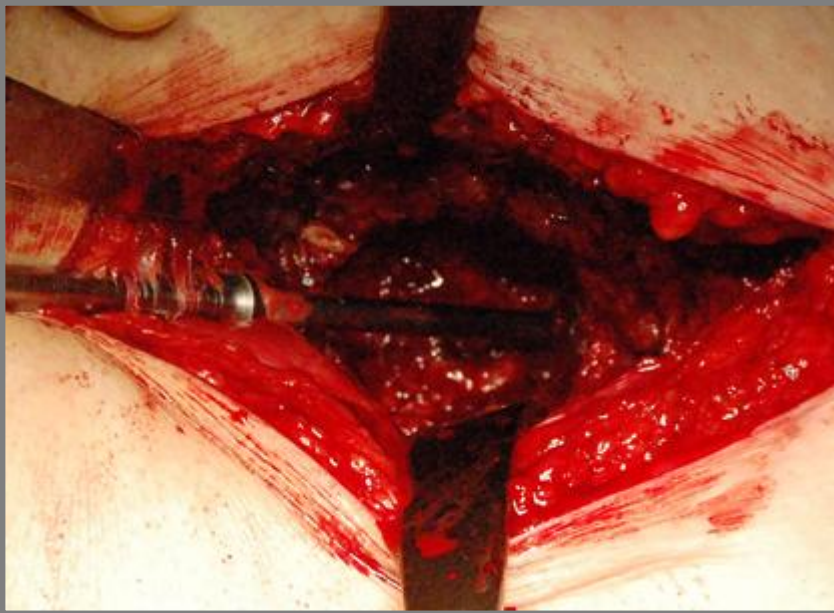
PREPARATION OF THE ACETABULAR



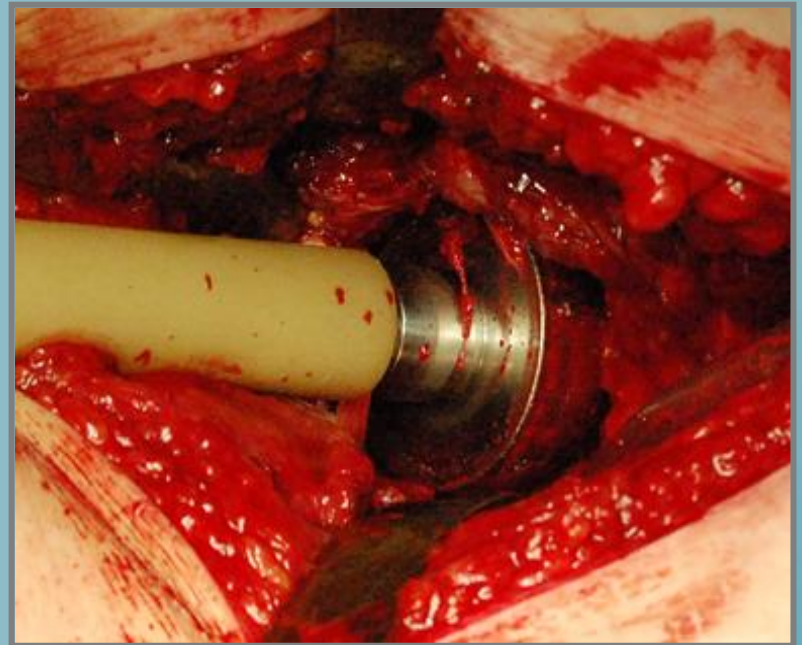
K-wire insertion
for driving the reamer



PREPARATION OF THE ACETABULAR

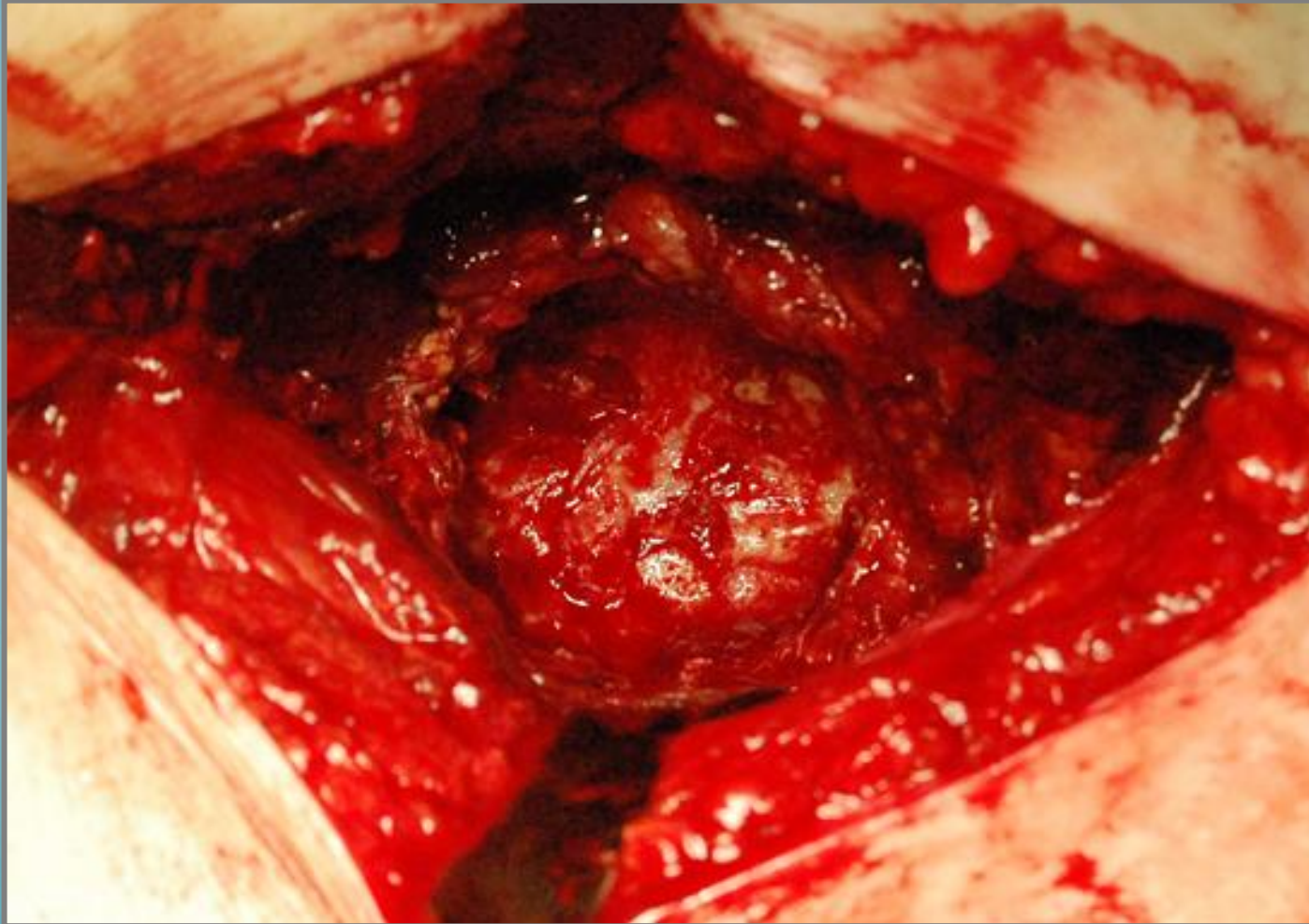


Cannulated drill for the preparation of the implant site of the stemmed cup



Acetabular reamer

PREPARATION OF THE ACETABULAR



The acetabulum is ready for the implantation reamer

PREPARATION OF IMPLANT AND GRAFTS

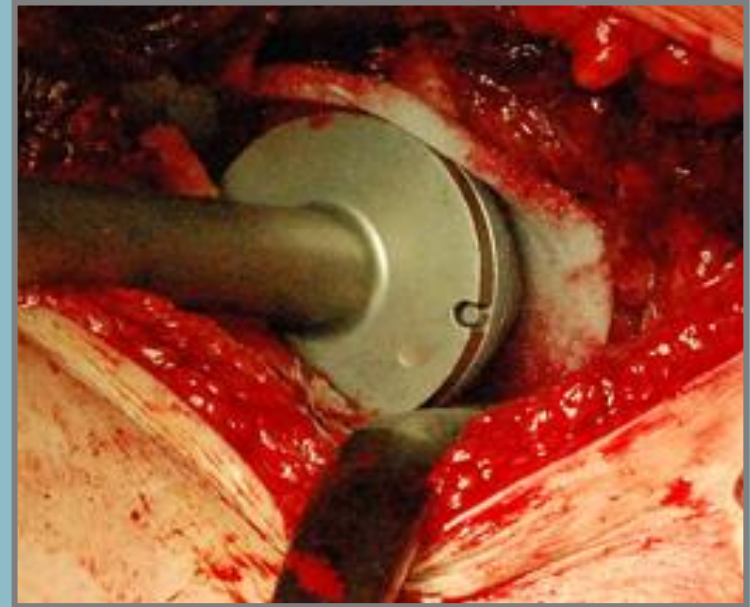
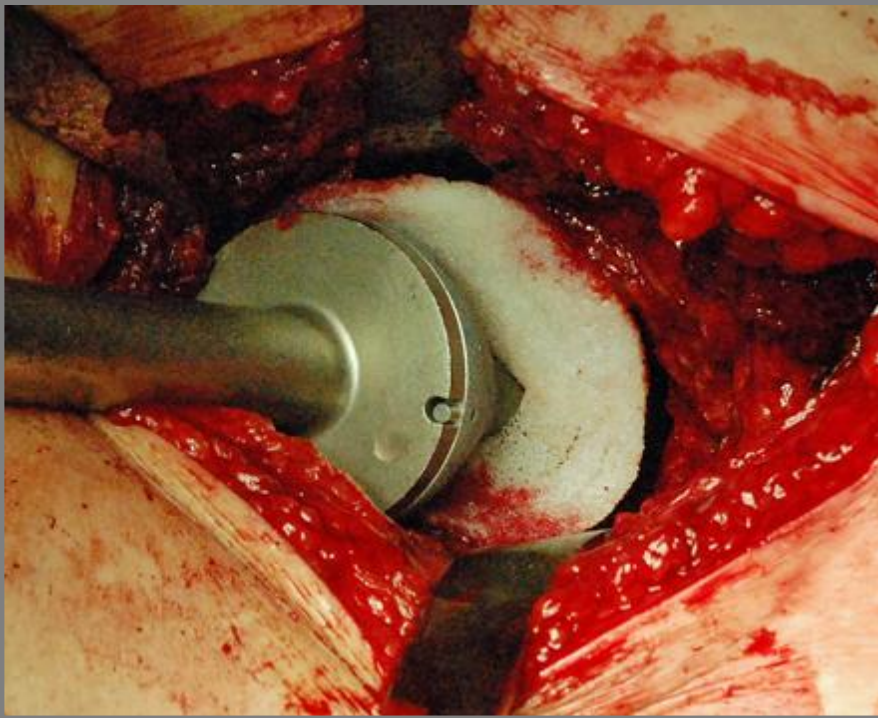


*Osteoimplant Acetabular Mat
and Angiostad 2cc ready for
implantation*



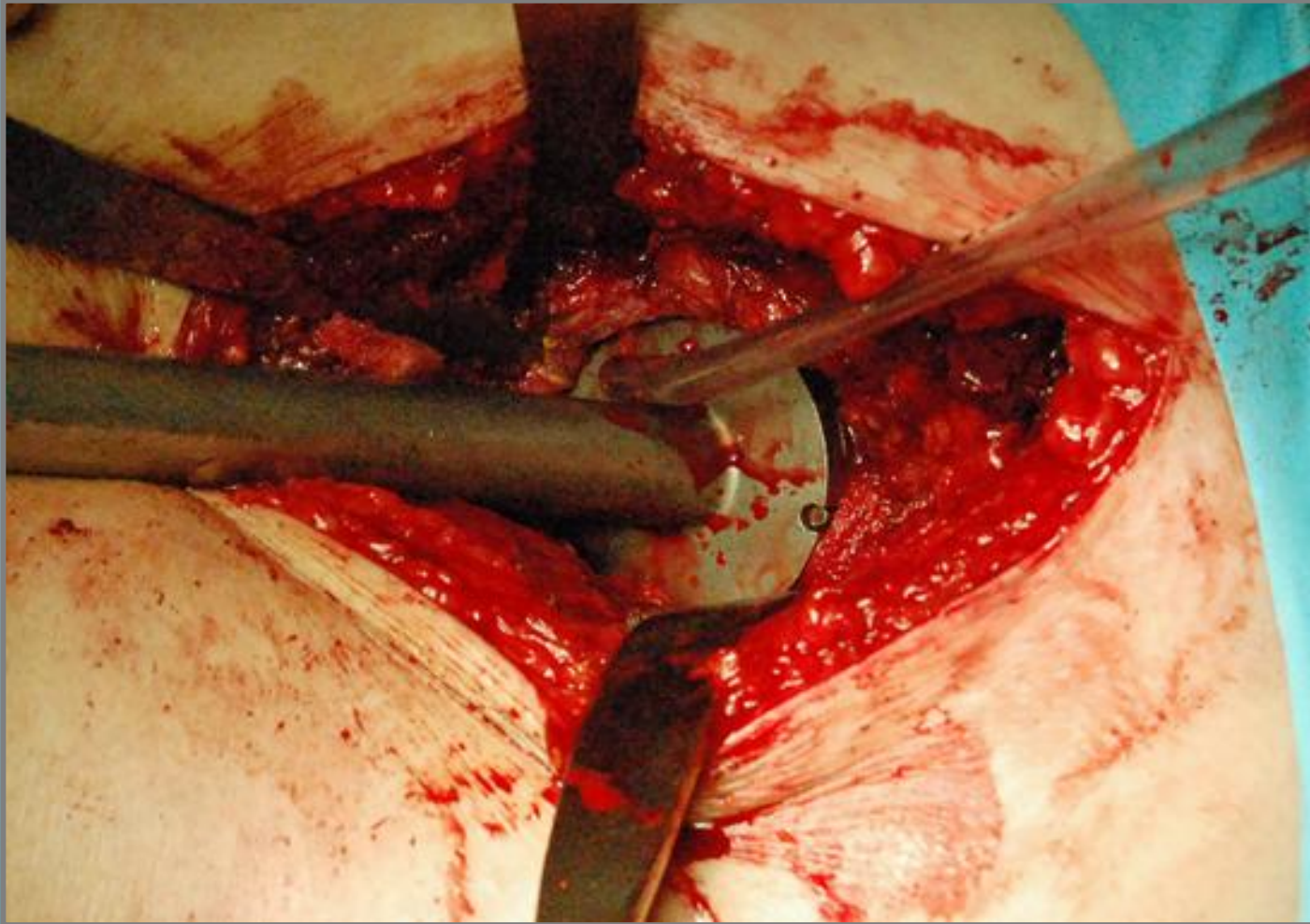
Osteoimplant Acetabular Mat is directly placed on the stemmed cup and Angiostad is gently smeared on its surface.

METAL CUP PLUS GRAFTS IMPACTION



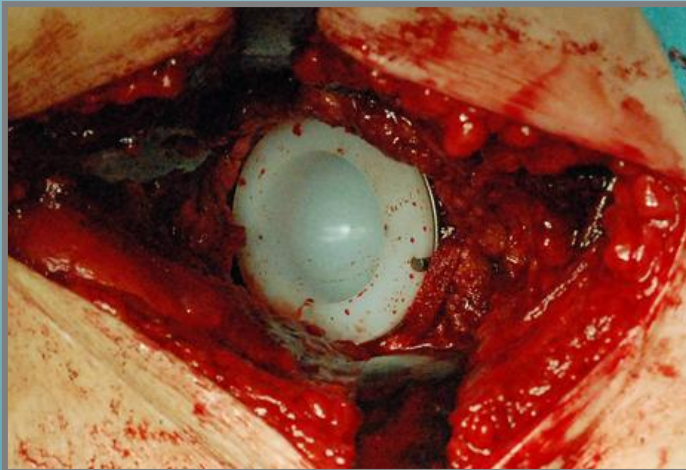
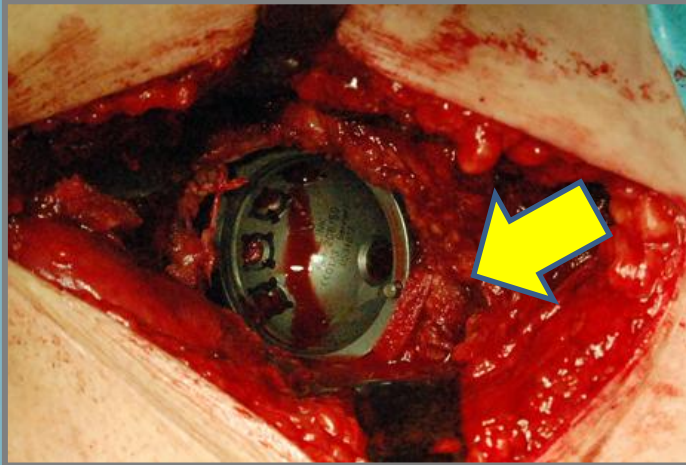
Impaction of the metal cup and grafts

METAL CUP PLUS GRAFTS IMPACTION



Impaction of the metal cup and grafts

METAL CUP PLUS GRAFTS IMPACTION



Implanted metal cup with
polyethylene insert



Intra-operative
fluoroscopy control

BIOTECK CRUNCH



Biocollagen Crunch 5 cc



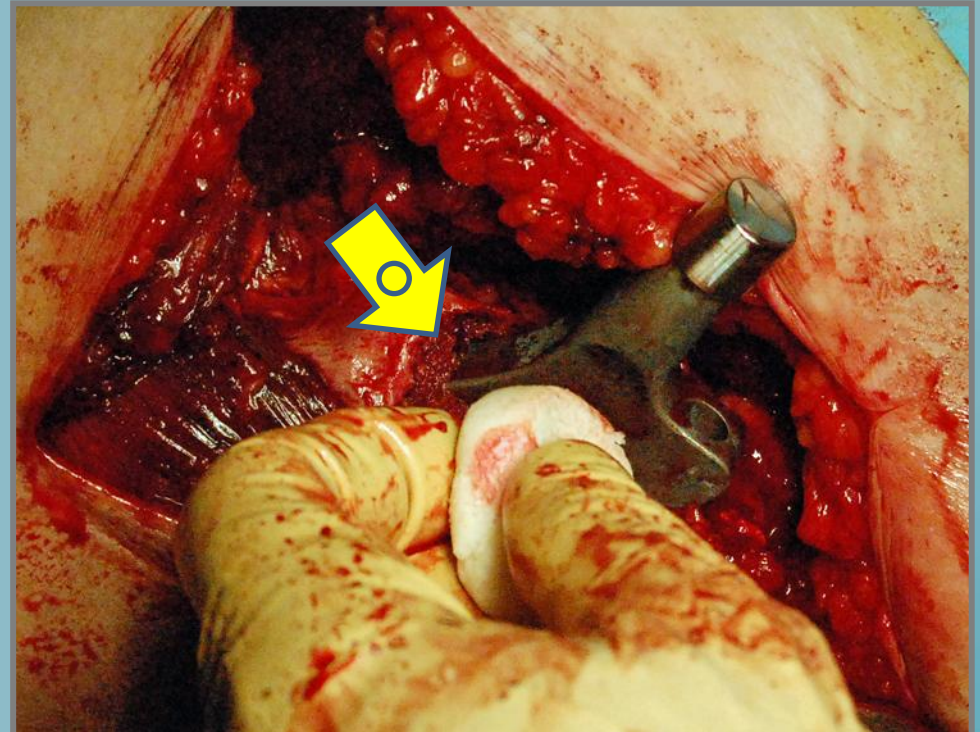
Biocollagen Crunch 5 cc in jar
is then used for filling proximal
femur defect

BIOCOLLAGEN CRUNCH



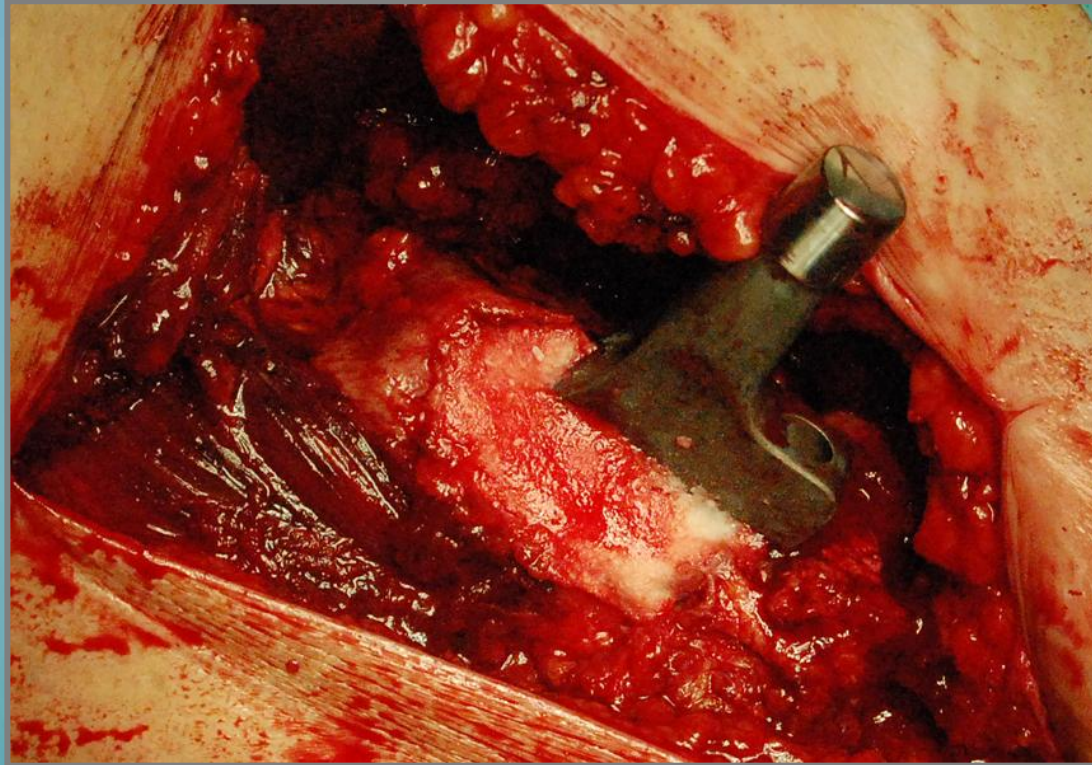
Impaction of femoral stem

- Cancellous graft is placed around the femoral stem for closing the femoral canal

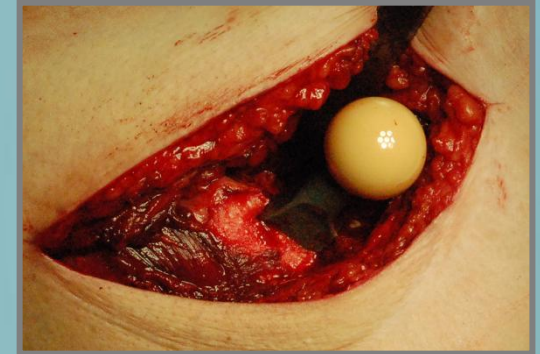


Biocollagen Crunch is used for the proximal femoral defect

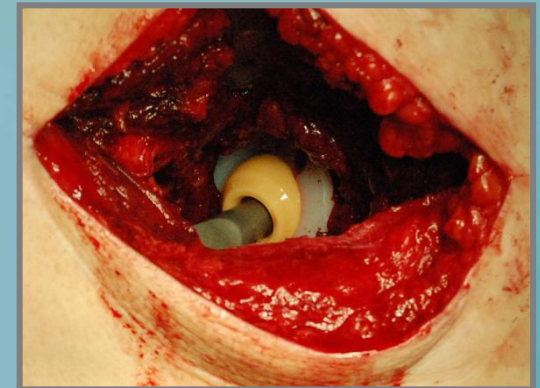
BIOCOLLAGEN CRUNCH



Biocollagen Crunch around the femoral stem



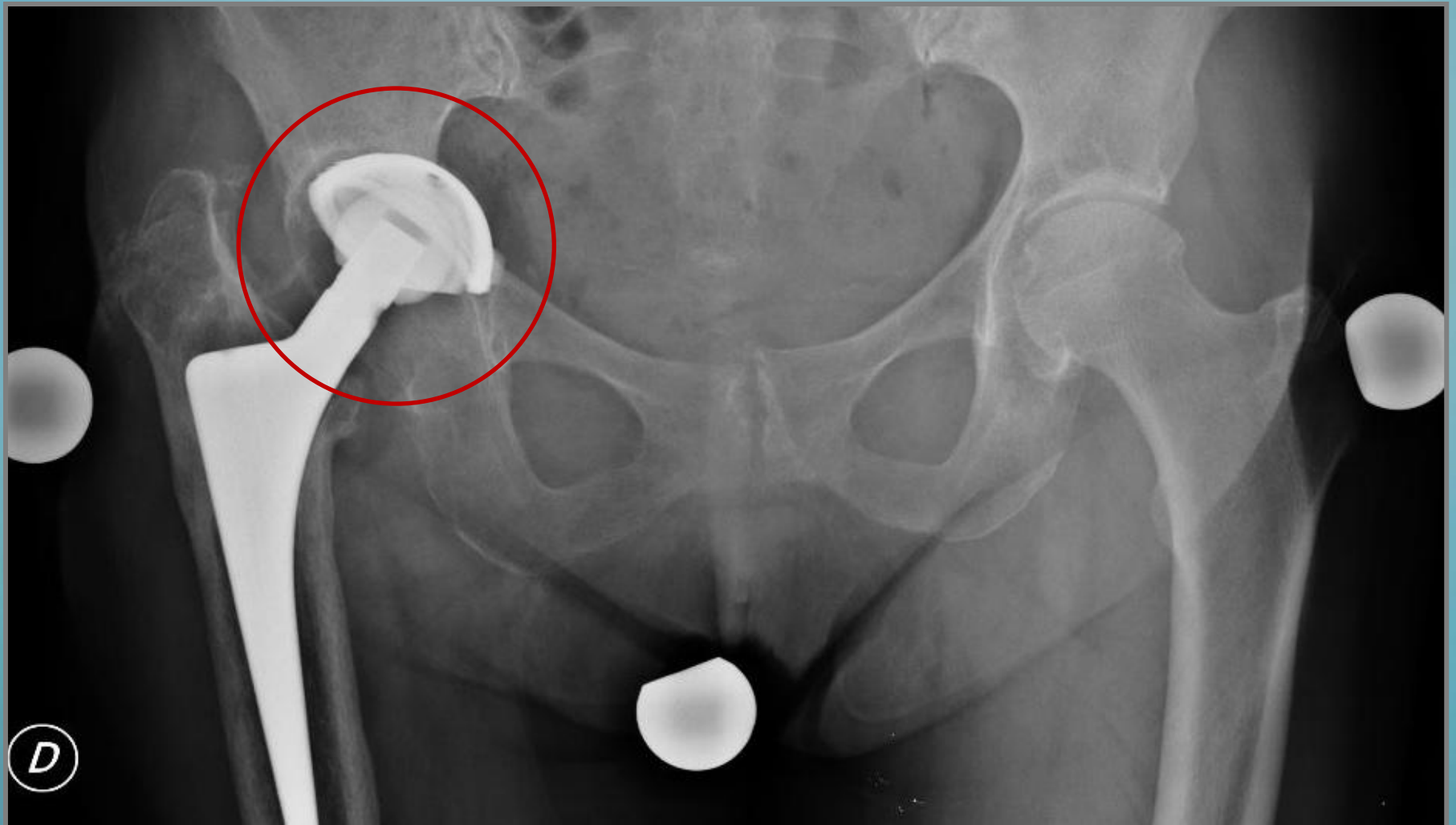
The femoral head is placed



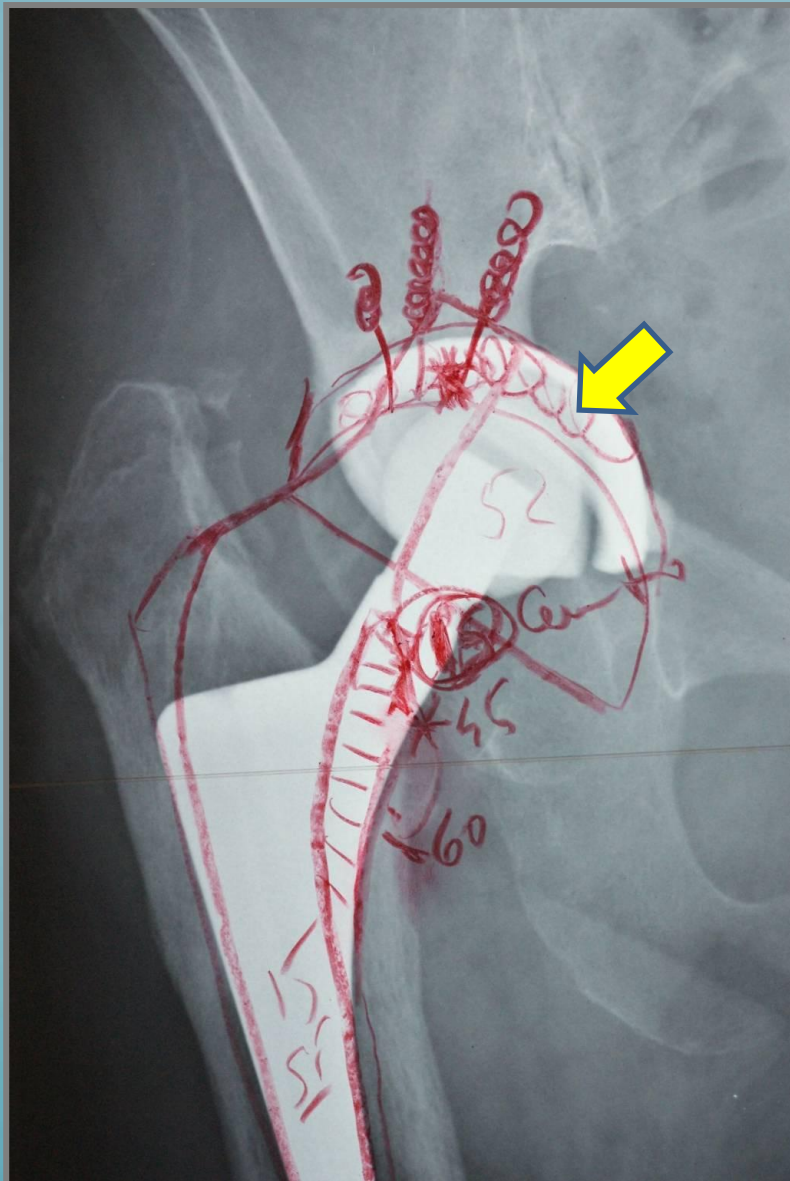
The joint has been reduced

*Courtesy of dr. Renzo Bianchi
Orthopedic Surgeon, Feltre-Italy*

TOTAL HIP REVISION – PRE-OP RX

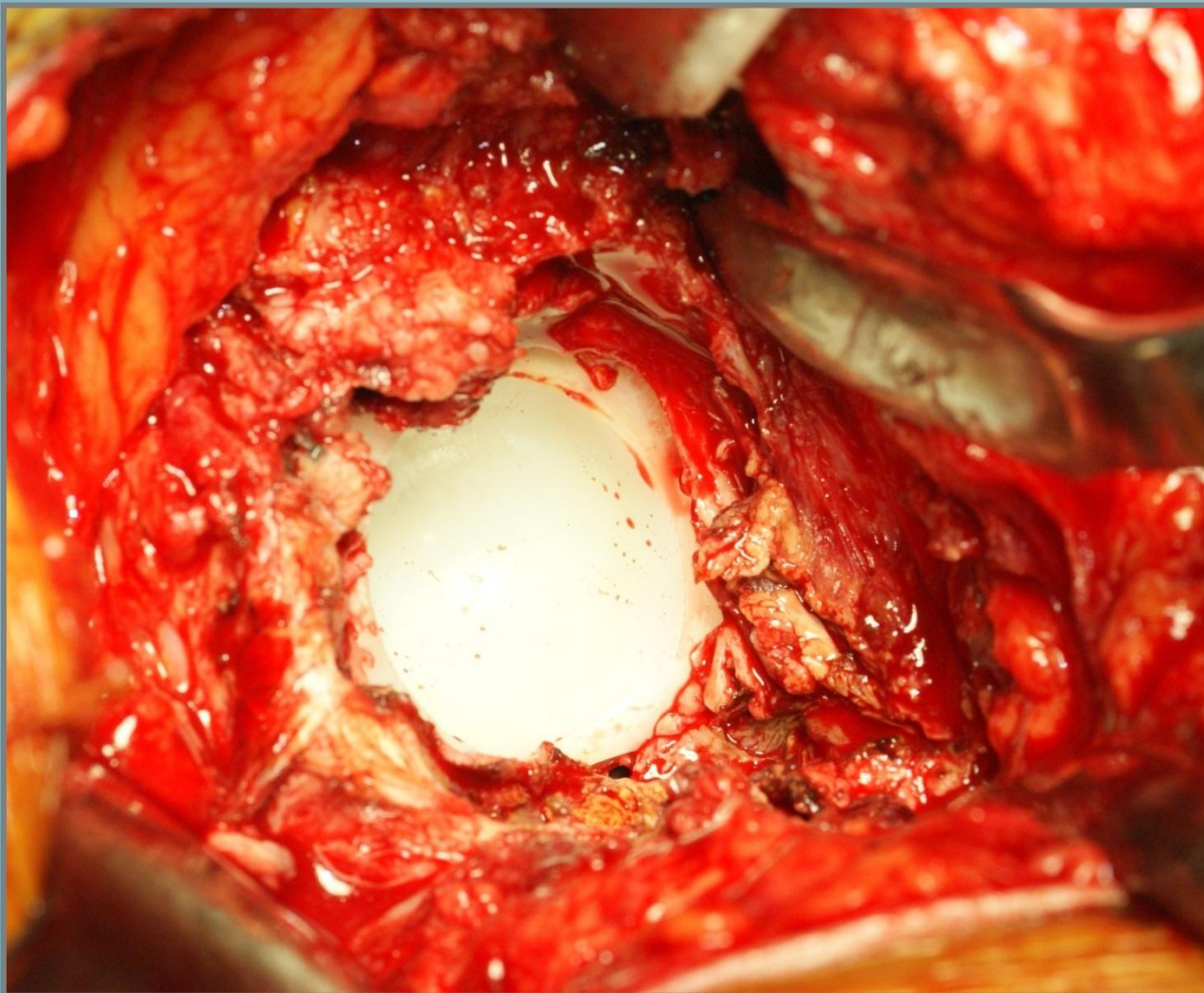


PRE-OP PLANNING

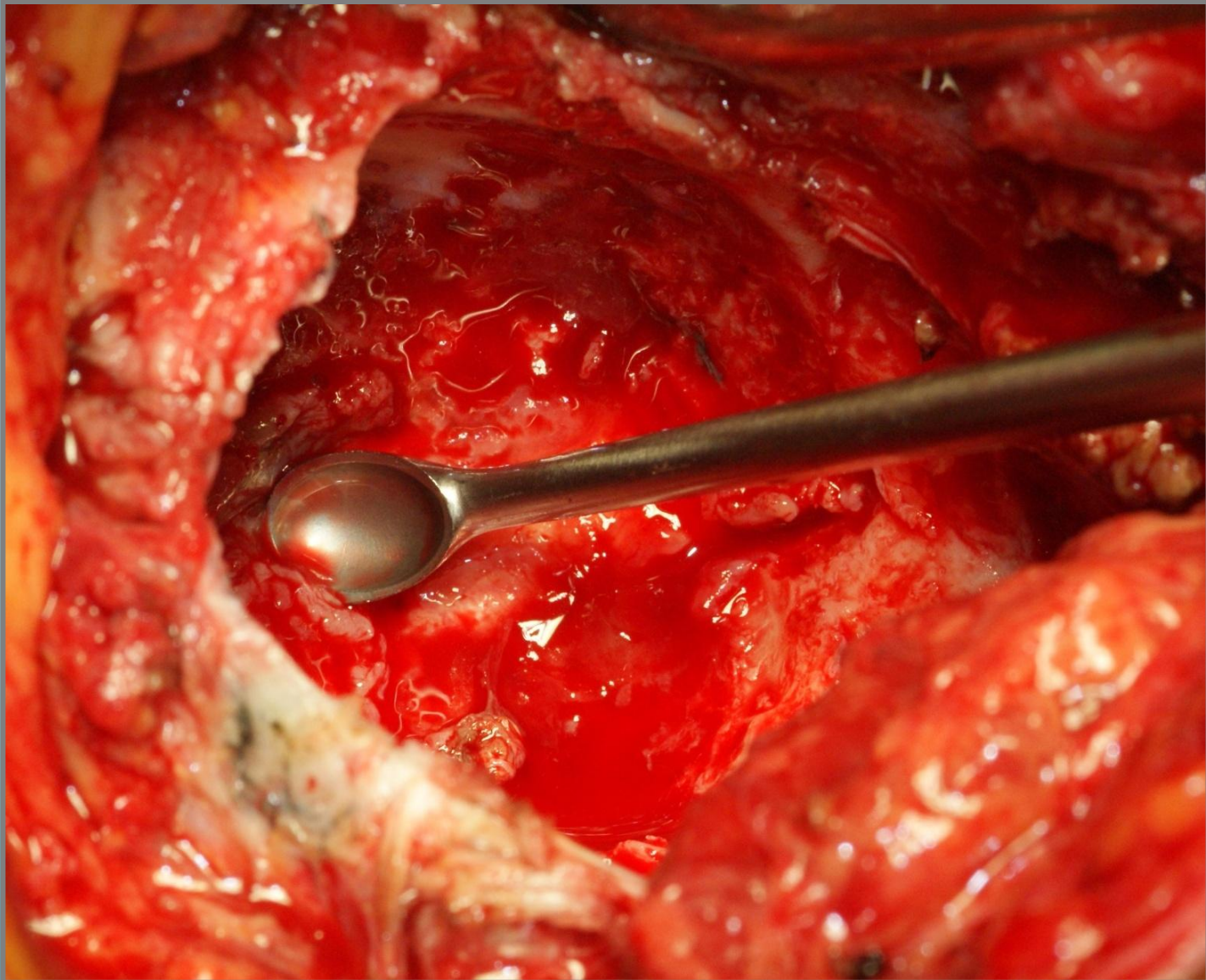


Bone loss to replace
with grafts

ACETABULAR COMPONENT TO REVISE



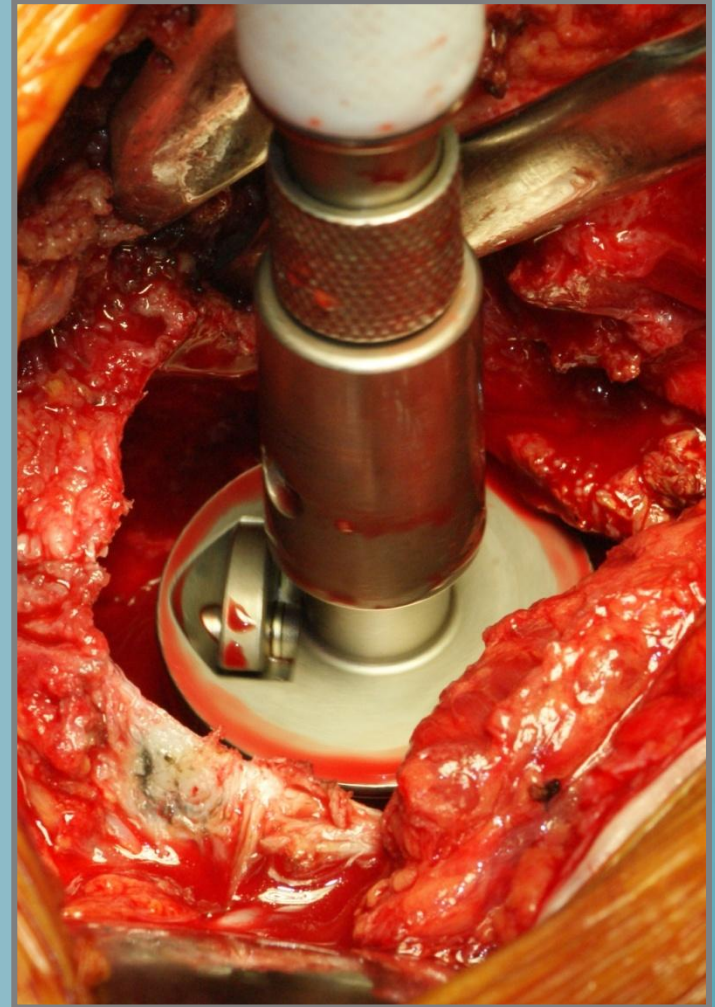
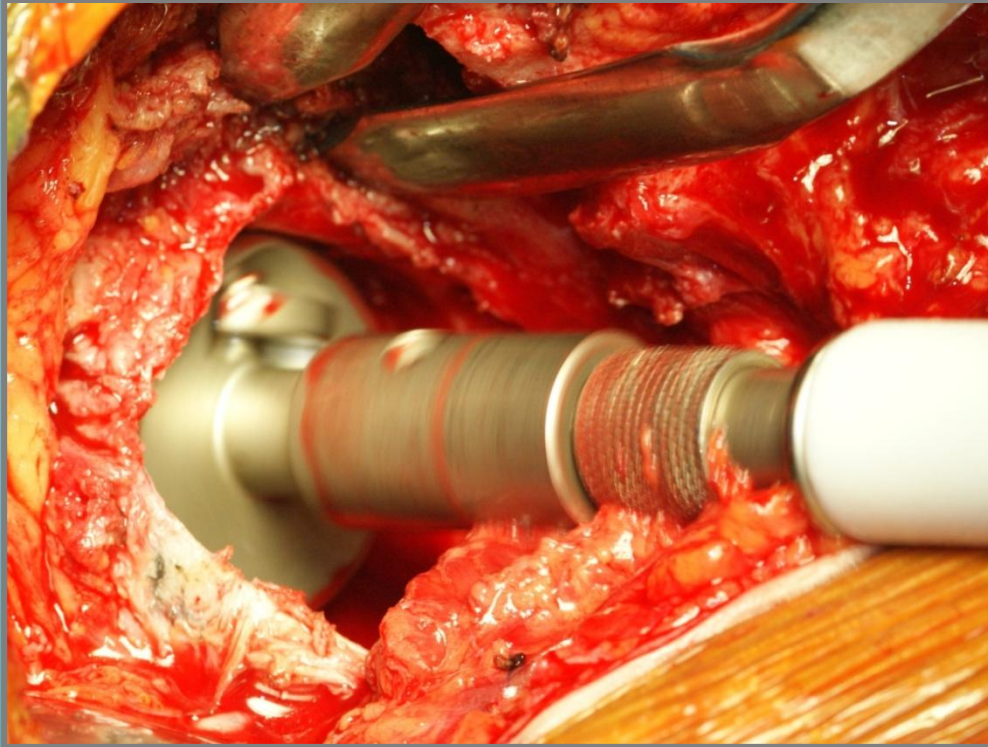
ACETABULAR DEFECT



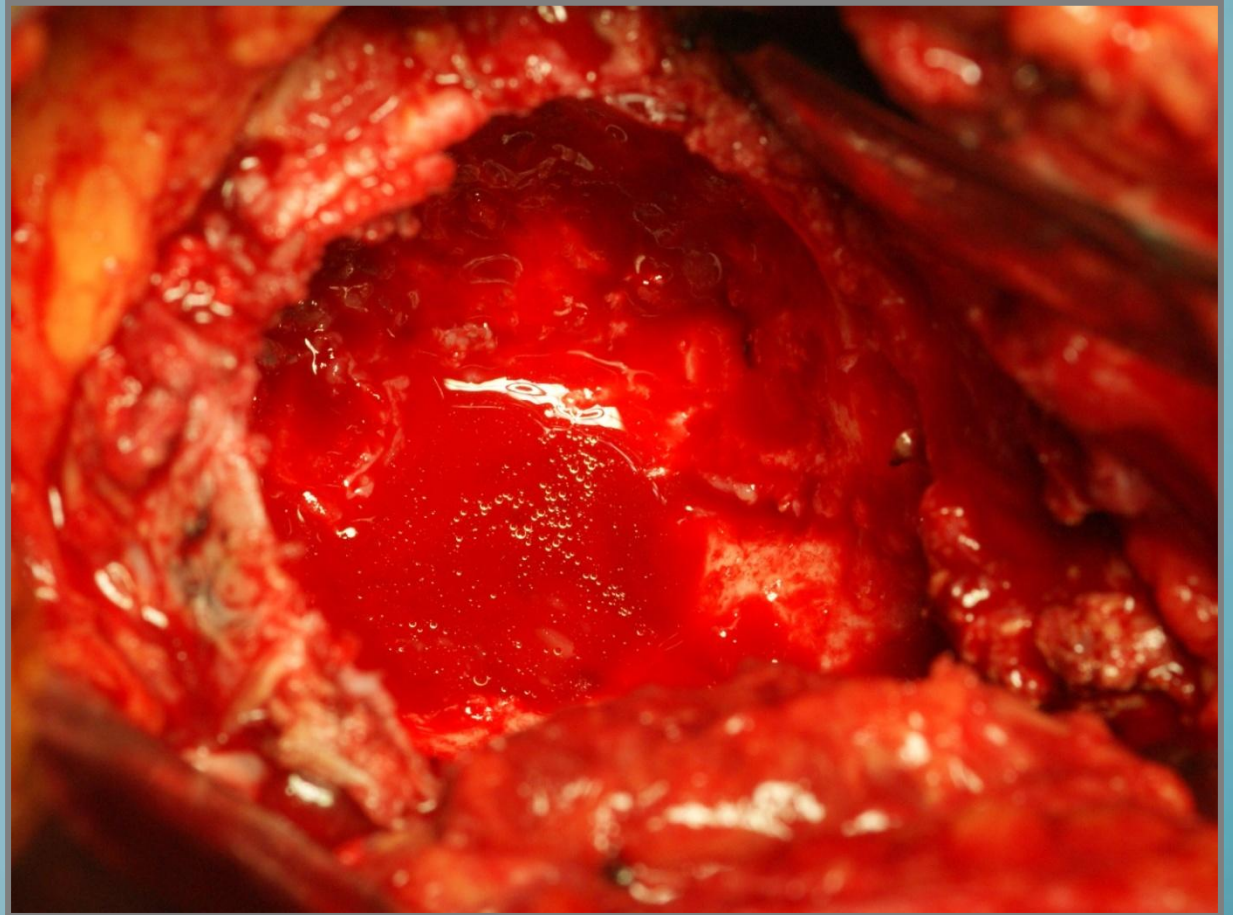
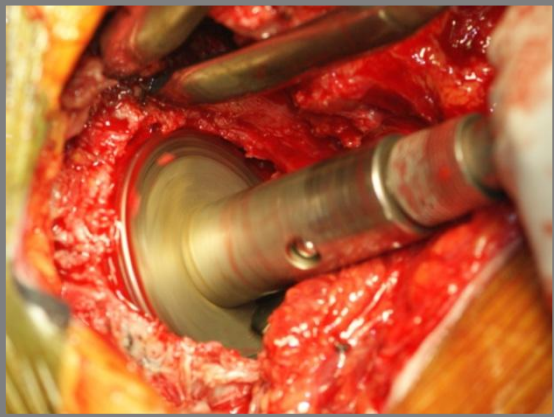
ACETABULAR DEFECT



REAMING OF THE ACETABULUM



REAMING OF THE ACETABULUM



BONE GRAFT PREPARATION



Activagen Injectable paste



Osteoplant Chips

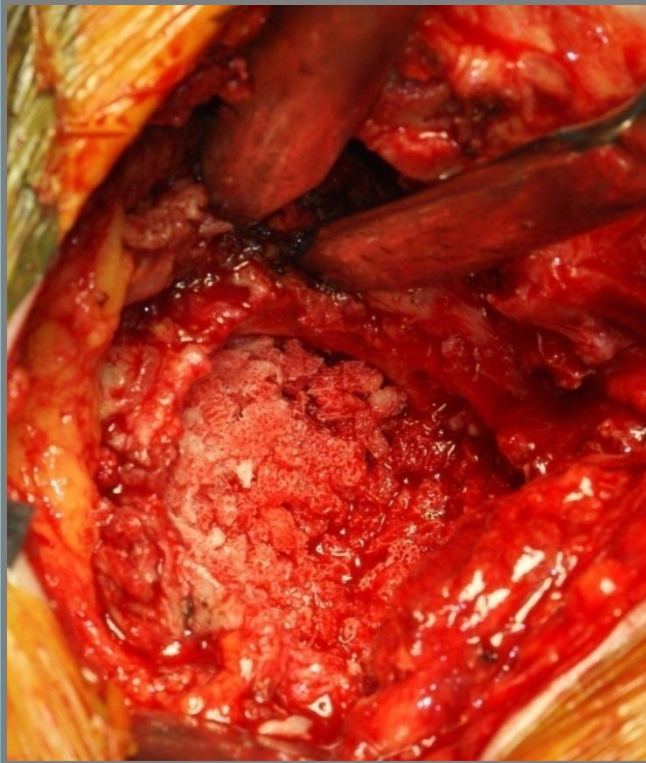


Bone paste are mixed with cancellous chips

FILLING OF THE ACETABULAR DEFECT

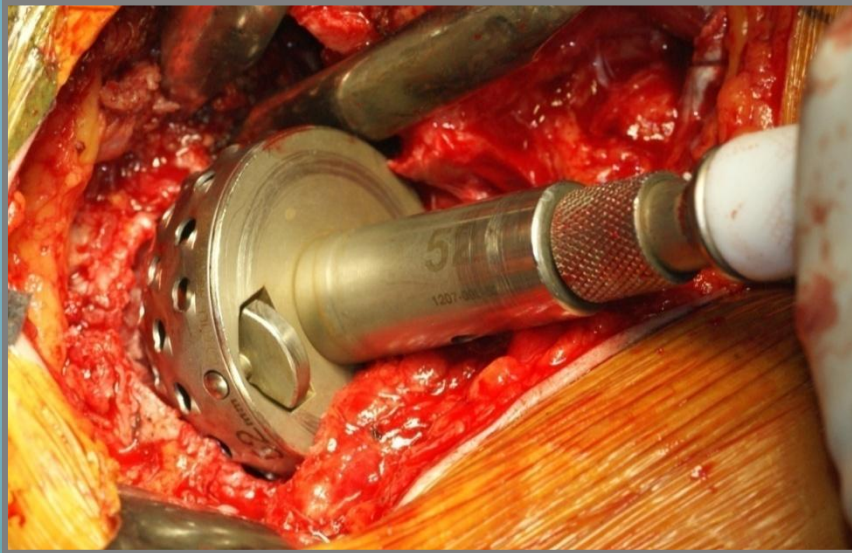


FILLING OF THE ACETABULAR DEFECT

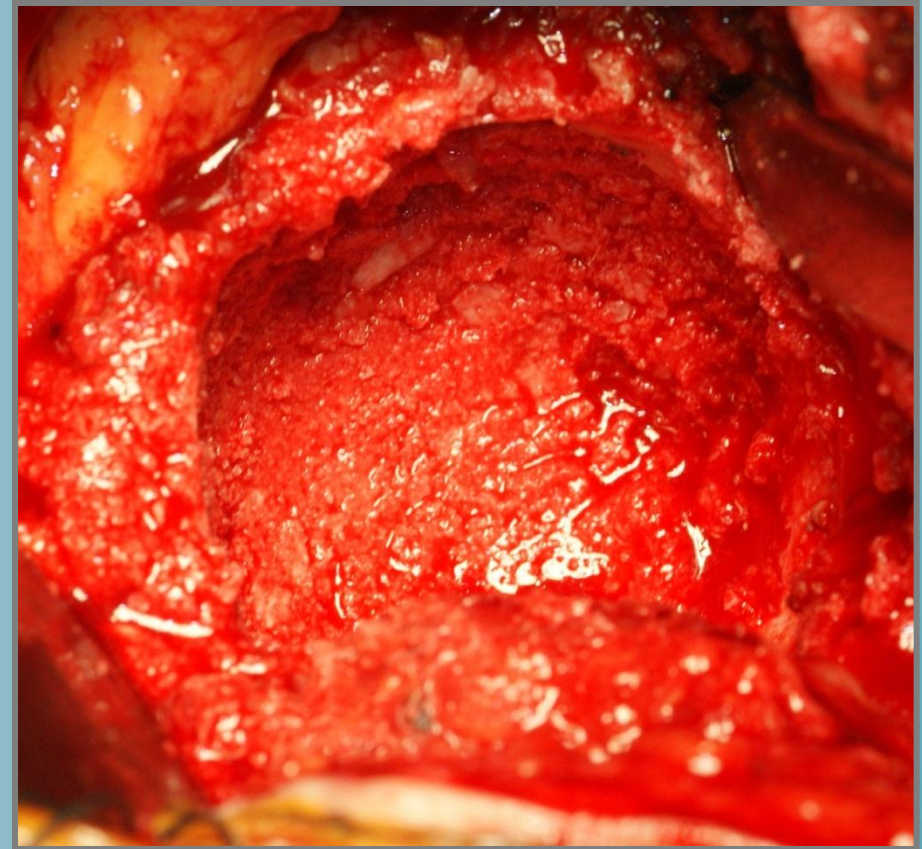


Osteopant Cancellous Chips implanted in the acetabulum

ACETABULAR DEFECT REPLACEMENT

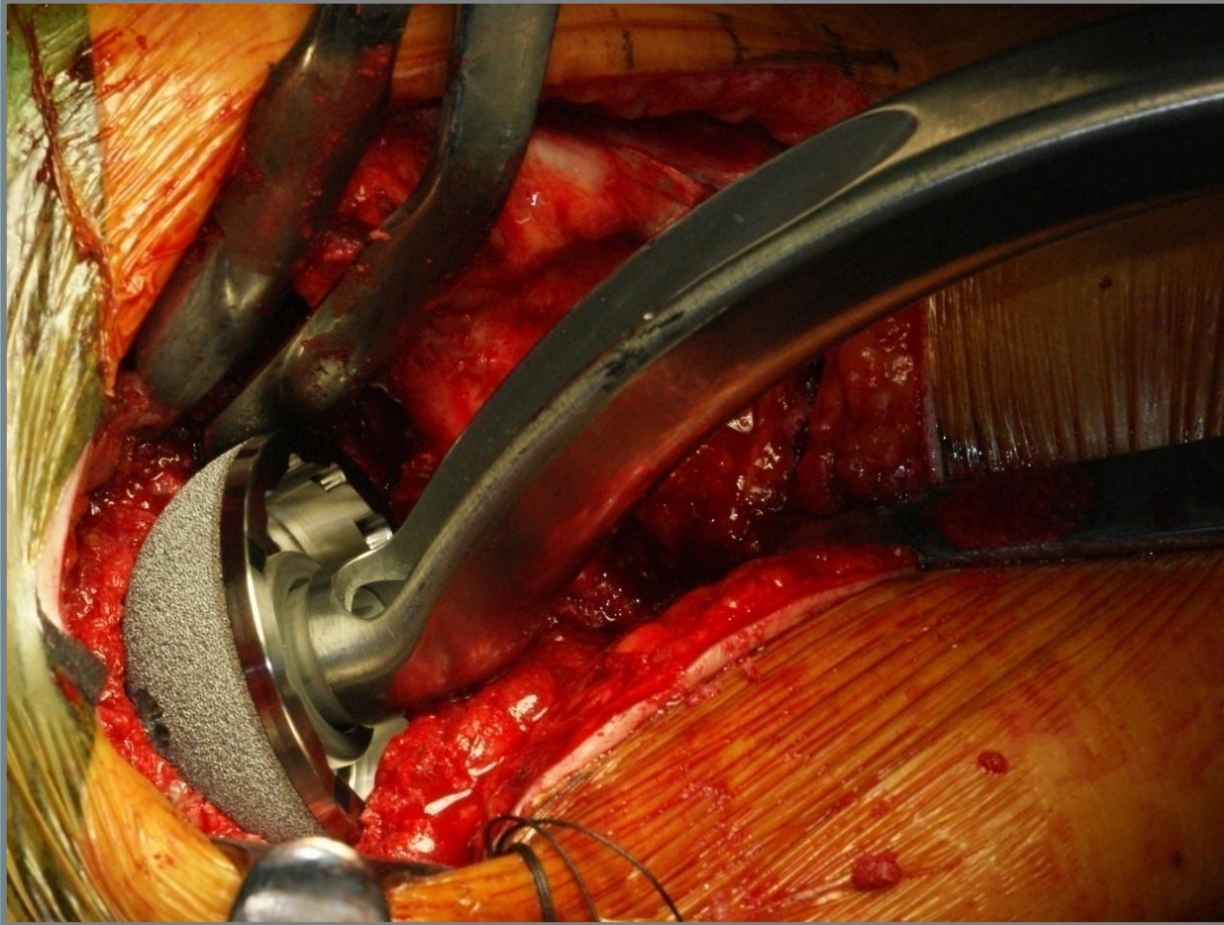


Chips are compacted by using the reamer with opposite rotation

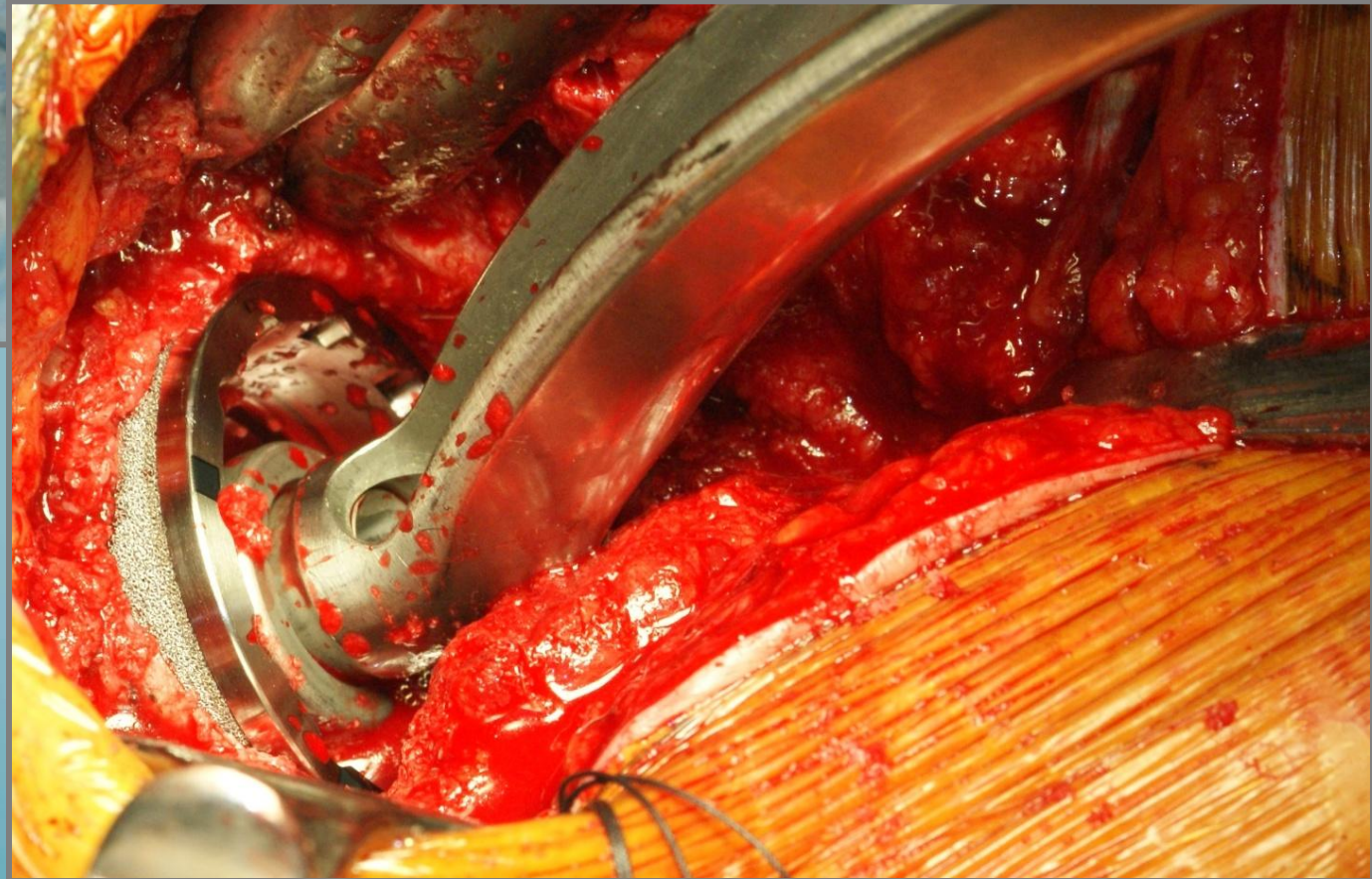


Appearance of the reconstruct acetabular cavity

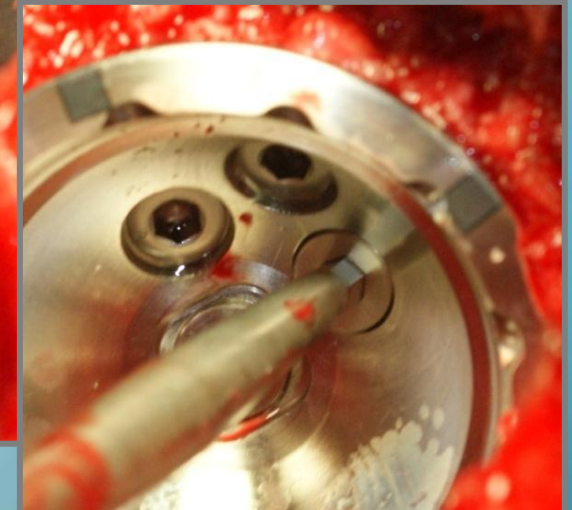
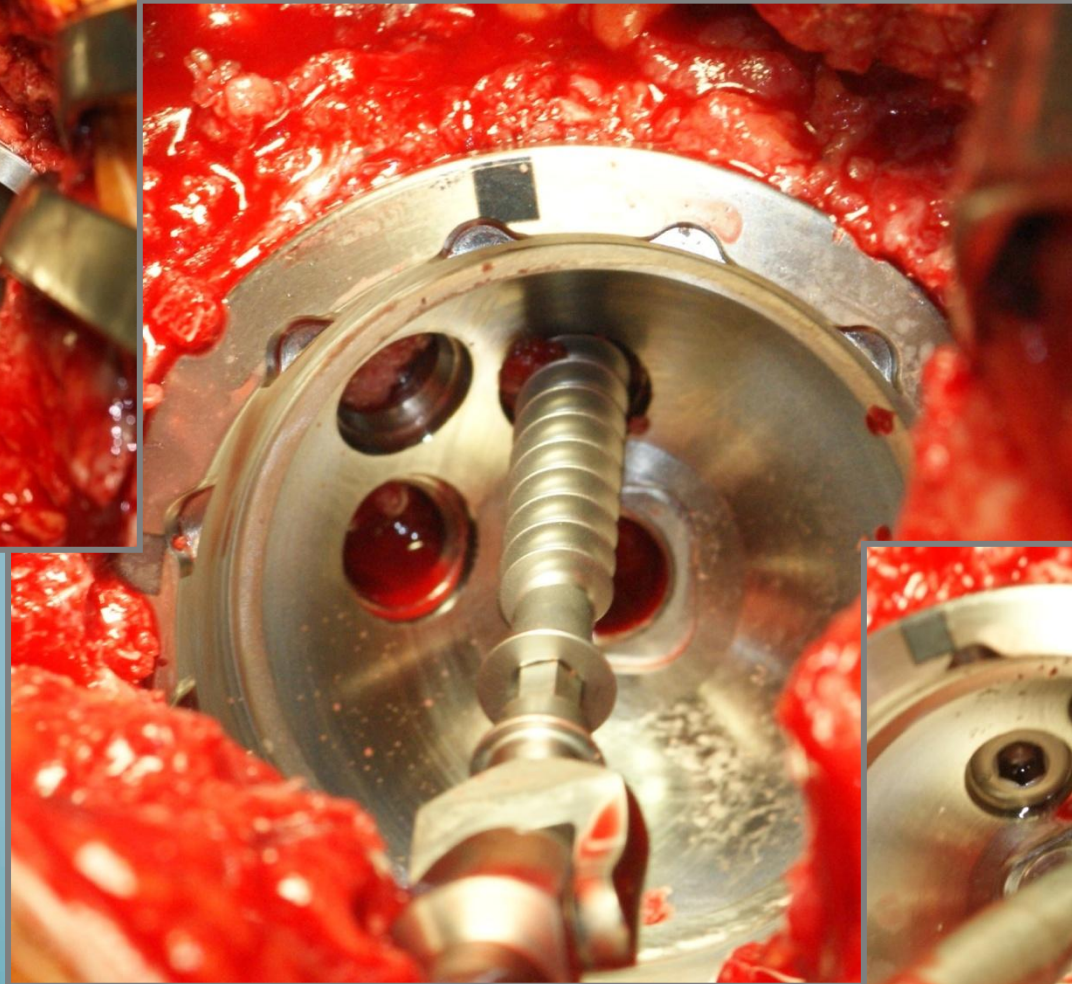
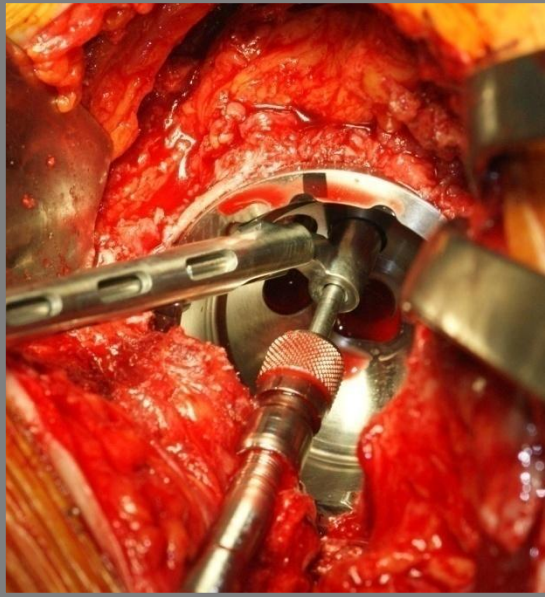
IMPACTION OF THE METAL CUP



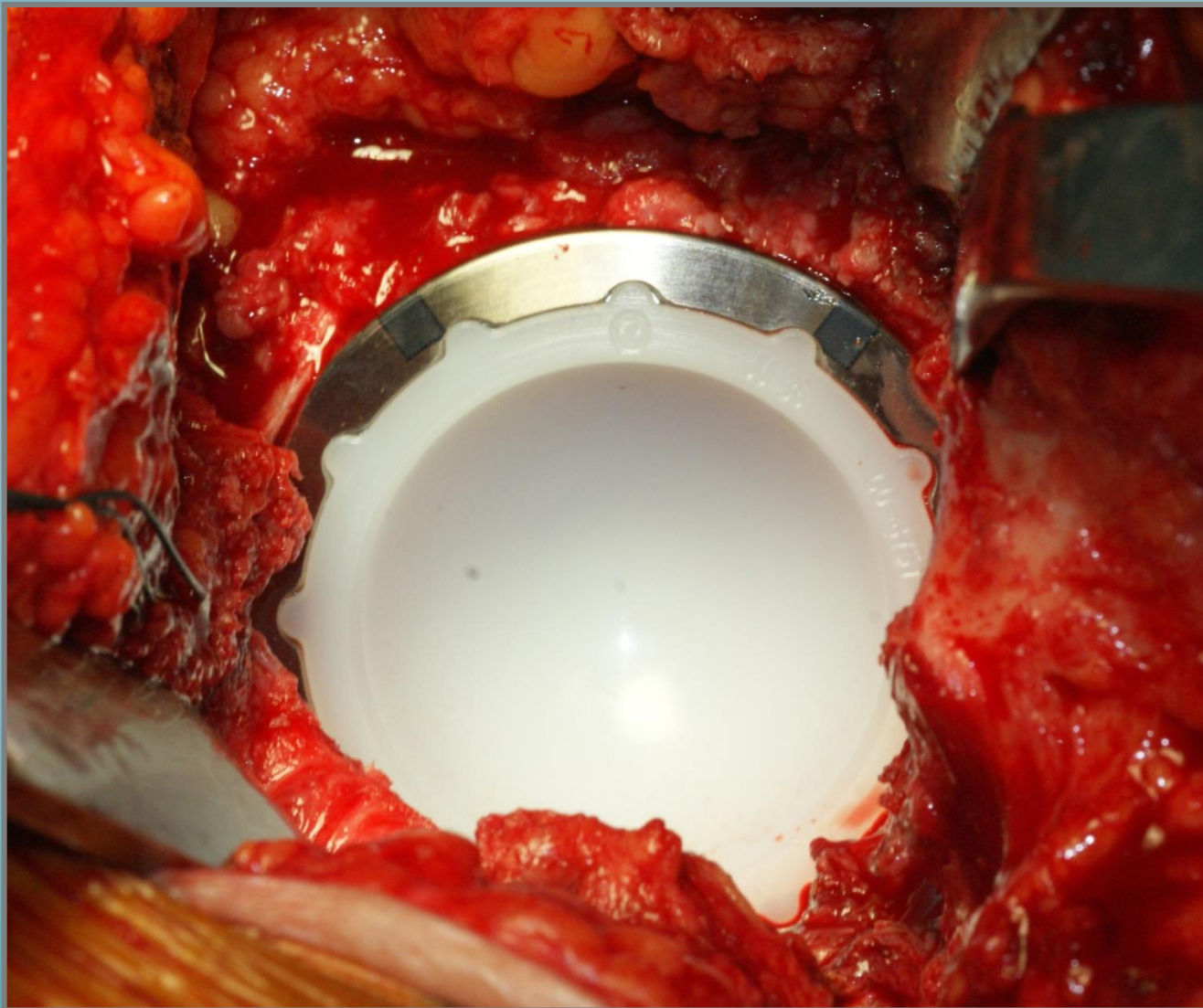
IMPACTION OF THE METAL CUP



METAL CUP FIXATION WITH SCREWS



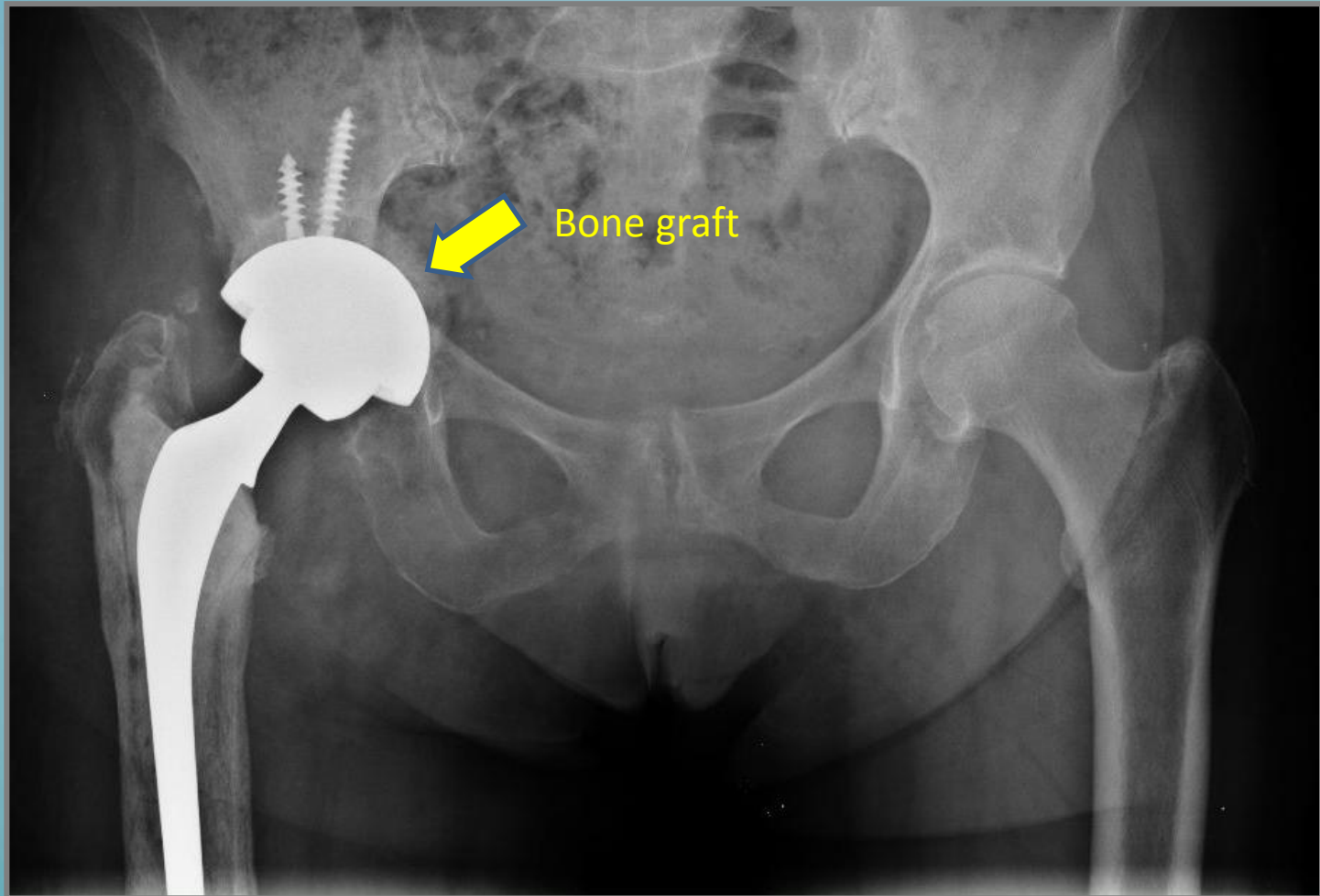
POLYETHYLENE INSERT IS PLACED



PRE-OP RX CONTROL



POST-OP RX CONTROL



*Courtesy of Prof. Massimiliano Marcucci
Director of C.E.S.A.T. Centro Eccellenza Sostituzioni Articolari
Fucecchio (FI) - Italy*



Surgical images of this presentation has been provided by courtesy of dr. R. Bianchi and Prf. M. Marcucci and can not be used without Bioteck and their written permission.

THANK YOU